

Product datasheet for **AM06137SU-N**

Casein Kinase 1 alpha (CSNK1A1) Mouse Monoclonal Antibody [Clone ID: 3C10F7]

Product data:

Product Type:	Primary Antibodies
Clone Name:	3C10F7
Applications:	ELISA, IHC, WB
Recommended Dilution:	ELISA: 1/10000. Western Blot: 1/500 - 1/2000. Immunohistochemistry on Paraffin Sections: 1/200 - 1/1000.
Reactivity:	Human
Host:	Mouse
Isotype:	IgG1
Clonality:	Monoclonal
Immunogen:	Purified recombinant fragment of CK1 expressed in E. Coli.
Specificity:	Recognizes CK1 (also designated Cytokeratin 1 or KRT1).
Formulation:	State: Ascites State: Ascitic fluid Preservative: 0.03% Sodium Azide
Conjugation:	Unconjugated
Storage:	Store the antibody undiluted at 2-8°C for one month or (in aliquots) at -20°C for longer. Avoid repeated freezing and thawing.
Stability:	Shelf life: one year from despatch.
Gene Name:	casein kinase 1 alpha 1
Database Link:	Entrez Gene 1452 Human P48729



[View online »](#)

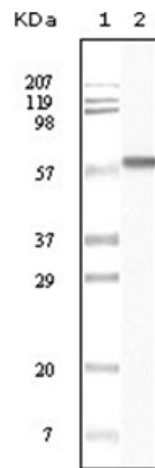
Background:

CK1 (also designated Cytokeratin 1 or KRT1),with 644-amino acid protein (about 70kDa), is a member of the keratin family. Cytokeratins play a critical role in differentiation and tissue specialization, and they function to maintain the overall structural integrity of epithelial cells. CK1 consist of basic or neutral proteins which are arranged in pairs of heterotypic keratin chains coexpressed during differentiation of simple and stratified epithelial tissues. CK1 is specifically expressed in the spinous and granular layers of the epidermis with family member KRT10 and mutations in these genes have been associated with bullous congenital ichthyosiform erythroderma.

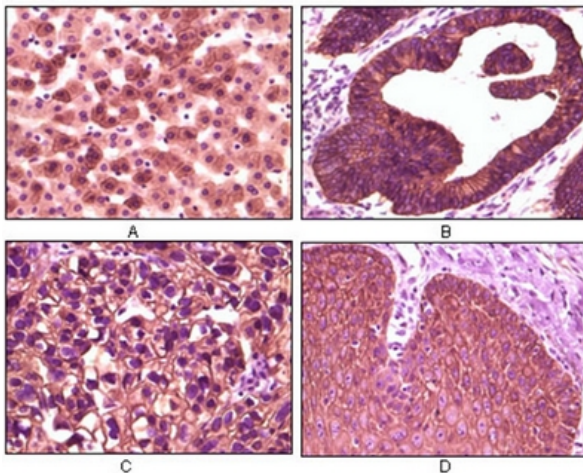
Synonyms:

Casein kinase I alpha, CKI-alpha, CK1

Product images:



Western blot analysis using CK1 antibody Cat.-No AM06137SU-N against truncated CK1 recombinant protein.



Immunohistochemical analysis of paraffin-embedded human liver tissue (A), colon carcinoma (B), lung carcinoma (C) and esophagus tissue (D), showing membrane localization using CK1 antibody Cat.-No AM06137SU-N with DAB staining.