

## Product datasheet for **AM06134PU-N**

### gamma Synuclein (SNCG) Mouse Monoclonal Antibody [Clone ID: 1H10D2]

#### Product data:

Product Type:	Primary Antibodies
Clone Name:	1H10D2
Applications:	IHC, WB
Recommended Dilution:	<b>Western Blot:</b> 1/500 - 1/2000. <b>Immunohistochemistry on Paraffin Sections:</b> 1/200 - 1/1000. <b>ELISA:</b> 1/10000.
Reactivity:	Human
Host:	Mouse
Isotype:	IgG1
Clonality:	Monoclonal
Immunogen:	Purified recombinant fragment of SNCG expressed in E. Coli.
Specificity:	Recognizes SNCG (breast cancer-specific protein 1).
Formulation:	Ascitic fluid containing 0.03% sodium azide.
Conjugation:	Unconjugated
Storage:	Store the antibody undiluted at 2-8°C for one month or (in aliquots) at -20°C for longer. Avoid repeated freezing and thawing.
Stability:	Shelf life: one year from despatch.
Gene Name:	synuclein gamma
Database Link:	<a href="#">Entrez Gene 6623 Human</a> <a href="#">O76070</a>



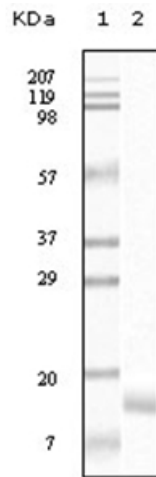
[View online »](#)

**Background:**

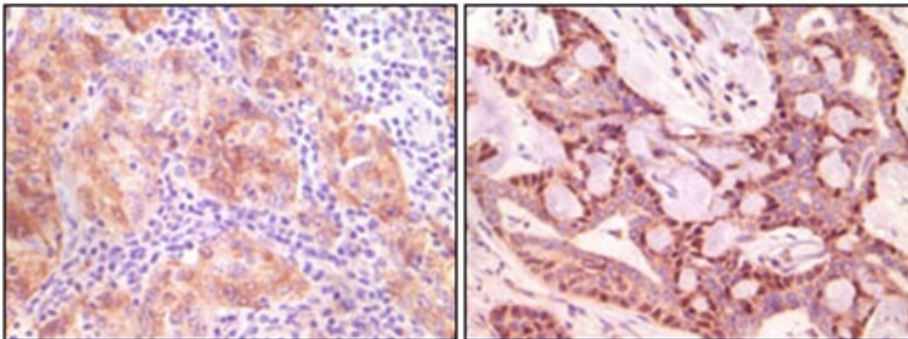
SNCG (also designated gamma-synuclein or breast cancer-specific protein 1), with 127-amino acid protein (about 14kDa), belongs to the synuclein family, which also includes alpha- and beta- synuclein. Three synucleins are located in the neuronal cytosol and enriched in presynaptic terminals, while SNCG is also expressed in many other non-neuronal tissues. SNCG is abnormally expressed in a high percentage of tumor tissues of diversified cancer types, including liver, esophagus, colon, gastric, lung, prostate, cervical, and breast cancer, but rarely expressed in tumor-matched nonneoplastic adjacent tissues. High levels of SNCG have been identified in advanced breast carcinomas suggesting a correlation between overexpression of SNCG and breast tumor development.

**Synonyms:**

PERSYN, Synuclein gamma, Synoretin, BCSG1, PRSN

**Product images:**

Western blot analysis using SNCG antibody Cat.-No AM06134PU-N against truncated SNCG recombinant protein.



Immunohistochemical analysis of paraffin-embedded human ovary carcinoma (left) and breast carcinoma (right), showing cytoplasmic (ovary carcinoma) localization, cytoplasmic and nuclear (breast carcinoma) localization using SNCG antibody Cat.-No AM06134PU-N with DAB staining.