

## Product datasheet for **AM06130SU-N**

### Fibulin 5 (FBLN5) Mouse Monoclonal Antibody [Clone ID: 3F10A5]

#### Product data:

Product Type:	Primary Antibodies
Clone Name:	3F10A5
Applications:	ELISA, IHC, WB
Recommended Dilution:	<b>ELISA:</b> 1/10000. <b>Western Blot:</b> 1/500-1/2000. <b>Immunohistochemistry on Paraffin Sections:</b> 1/200-1/1000.
Reactivity:	Human
Host:	Mouse
Isotype:	IgG1
Clonality:	Monoclonal
Immunogen:	Purified recombinant fragment of Fibulin 5 expressed in E. Coli.
Specificity:	Recognizes Human Fibulin 5 (FBLN5). Other species not tested.
Formulation:	State: Ascites State: Ascitic fluid Preservative: 0.03% Sodium Azide
Conjugation:	Unconjugated
Storage:	Store undiluted at 2-8°C for one month or (in aliquots) at -20°C for longer. Avoid repeated freezing and thawing.
Stability:	Shelf life: one year from despatch.
Gene Name:	fibulin 5
Database Link:	<a href="#">Entrez Gene 10516 Human</a> <a href="#">Q9UBX5</a>



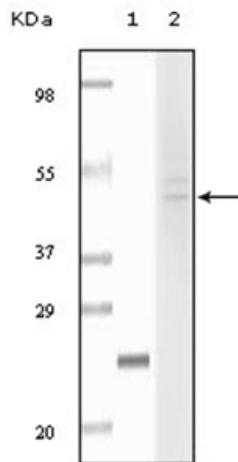
[View online »](#)

**Background:**

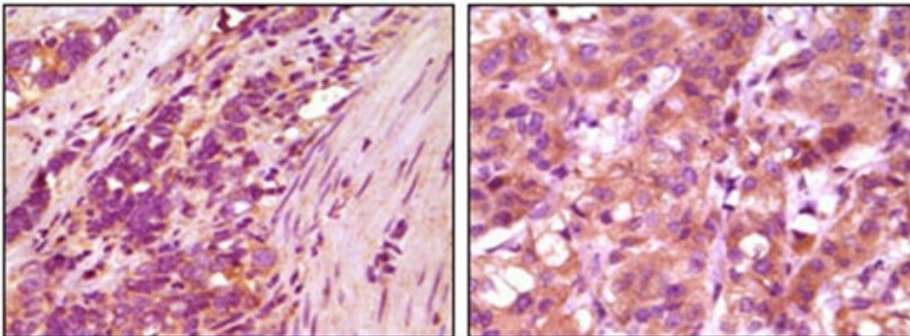
Fibulin 5 (FBLN5), with 448-amino acid protein (about 50kDa), is a recently discovered multifunctional extracellular matrix protein that mediates endothelial cell adhesion through integrin ligation, regulates cell growth and motility in a context-specific manner, and prevents elastinopathy in vivo. Fibulin-5 is abundantly expressed in great vessels and cardiac valves during embryogenesis, and in many adult tissues including the aorta, lung, uterus and skin, all of which contain abundant elastic fibres. Decreased fibulin-5 may contribute to the pathogenesis of aortic dissection by impairing elastic fiber assembly. Fibulin-5 is also a good marker of skin ageing and that the earlier loss of fibulin-5 may involve age-dependent changes in other elastic fibre components.

**Synonyms:**

FIBL-5, FBLN5, DANCE, Urine p50 protein, UP50

**Product images:**


Western blot analysis using Fibulin-5 antibody Cat.-No AM06130SU-N against truncated Fibulin-5 recombinant protein (Lane 1) and HeLa cell lysate (Lane 2).



Immunohistochemical analysis of paraffin-embedded human stomach carcinoma (left) and breast carcinoma (right), showing cytoplasmic localization using Fibulin-5 antibody Cat.-No AM06130SU-N with DAB staining.