

Product datasheet for **AM06128SU-N**

alpha Synuclein (SNCA) Mouse Monoclonal Antibody [Clone ID: 2B2D1]

Product data:

Product Type:	Primary Antibodies
Clone Name:	2B2D1
Applications:	ELISA, IHC, WB
Recommended Dilution:	ELISA: 1/10000. Western Blot: 1/500 - 1/2000. Immunohistochemistry on Paraffin Sections: 1/200 - 1/1000.
Reactivity:	Human
Host:	Mouse
Isotype:	IgG
Clonality:	Monoclonal
Immunogen:	Purified recombinant fragment of SNCA expressed in E. Coli.
Specificity:	Recognizes Alpha-synuclein (SNCA).
Formulation:	State: Ascites State: Ascitic fluid Preservative: 0.03% Sodium Azide
Conjugation:	Unconjugated
Storage:	Store the antibody undiluted at 2-8°C for one month or (in aliquots) at -20°C for longer. Avoid repeated freezing and thawing.
Stability:	Shelf life: one year from despatch.
Gene Name:	synuclein alpha
Database Link:	Entrez Gene 6622 Human P37840



[View online »](#)

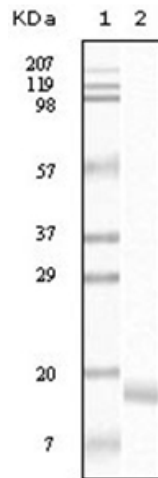
Background:

Alpha-synuclein (SNCA), with 140-amino acid protein (about 15kDa), belongs to the synuclein family, which also includes beta- and gamma-synuclein. SNCA is a soluble protein, expressed principally in the brain but also expressed in low concentrations in all tissues examined (except liver). SNCA is implicated in the regulation of dopamine release and transport. The triplication of the SNCA can cause Parkinson disease (PD) and diffuse Lewy body disease within the same kindred. SNCA peptides are a major component of amyloid plaques in the brains of patients with Alzheimer's disease. Immunohistochemistry for SNCA has become the histological technique of choice for the diagnosis for Parkinson's disease, Dementia with Lewy bodies and Multiple System Atrophy.

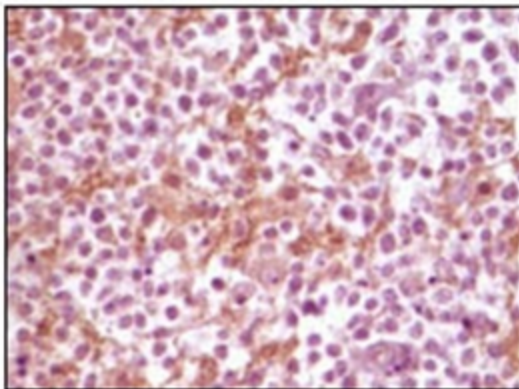
Synonyms:

NACP, PARK1

Product images:



Western blot analysis using SNCA antibody Cat.- No AM06128SU-N against truncated SNCA recombinant protein.



Immunohistochemical analysis of paraffin-embedded human glioma tissue, showing membrane localization using SNCA antibody Cat.- No AM06128SU-N with DAB staining.