

## Product datasheet for **AM06122SU-N**

### Eph receptor A2 (EPHA2) Mouse Monoclonal Antibody [Clone ID: 1B3C7]

#### Product data:

Product Type:	Primary Antibodies
Clone Name:	1B3C7
Applications:	IHC, WB
Recommended Dilution:	<b>ELISA:</b> 1/10000. <b>Western Blot:</b> 1/500 - 1/2000. <b>Immunohistochemistry on Paraffin Sections:</b> 1/200 - 1/1000.
Reactivity:	Human
Host:	Mouse
Isotype:	IgM
Clonality:	Monoclonal
Immunogen:	Purified recombinant fragment of EphA2 expressed in E. Coli.
Specificity:	Recognizes EPH receptor A2 (EphA2)
Formulation:	State: Ascites State: Ascitic fluid Preservative: 0.03% Sodium Azide
Conjugation:	Unconjugated
Storage:	Store the antibody undiluted at 2-8°C for one month or (in aliquots) at -20°C for longer. Avoid repeated freezing and thawing.
Stability:	Shelf life: one year from despatch.
Gene Name:	EPH receptor A2
Database Link:	<a href="#">Entrez Gene 1969 Human P29317</a>



[View online »](#)

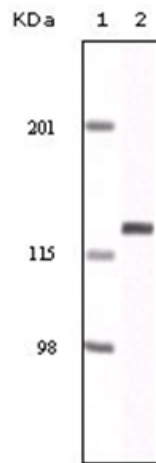
**Background:**

Eph receptor A2 (EphA2), with 976-amino acid protein (about 107 kDa), belongs to the ephrin receptor subfamily of the protein-tyrosine kinase family. EphA1, EphA2, EphA3, EphA4, EphA5, EphA6, EphA7, EphA8, EphA10, EphB1, EphB2, EphB3, EphB4 and EphB6 are Eph family receptors for Ephrin family ligands. In normal cells, EphA2 negatively regulates cell growth and invasiveness. EphA2 is overexpressed by many human cancers, and is often associated with poor prognostic features. The clinical significance of the expression of EphA2 was observed in breast, prostate, colon, skin, cervical, ovarian, and lung cancers. EphA2 may serve as a novel target for bladder cancer, colonic adenocarcinoma and ovarian cancer therapy.

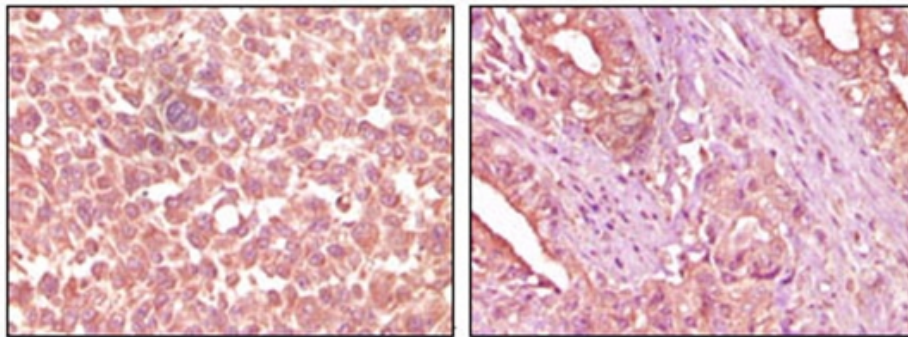
**Synonyms:**

Ephrin type-A receptor 2, Epithelial cell kinase, Eph receptor A2

**Product images:**



Western blot analysis using EphA2 antibody Cat.-No AM06122SU-N against NIH/3T3 cell lysate.



Immunohistochemical analysis of paraffin-embedded human skin carcinoma (left) and pancreas carcinoma (right) tissue, showing cytoplasmic localization using EphA2 antibody Cat.-No AM06122SU-N with DAB staining.