

## Product datasheet for **AM06117PU-N**

### **EHMT1/GLP (EHMT1) Mouse Monoclonal Antibody [Clone ID: 1B7B4]**

#### **Product data:**

Product Type:	Primary Antibodies
Clone Name:	1B7B4
Applications:	ELISA, WB
Recommended Dilution:	<b>Western Blot:</b> 1/500 - 1/2000. <b>ELISA:</b> 1/10000.
Reactivity:	Human
Host:	Mouse
Isotype:	IgG1
Clonality:	Monoclonal
Immunogen:	Purified recombinant fragment of GLP expressed in E. Coli.
Specificity:	This antibody reacts to GLP.
Formulation:	PBS State: Purified State: Liquid purified Ig fraction Preservative: 0,03% sodium azide
Conjugation:	Unconjugated
Storage:	Store the antibody undiluted at 2-8°C for one month or (in aliquots) at -20°C for longer. Avoid repeated freezing and thawing.
Stability:	Shelf life: one year from despatch.
Gene Name:	euchromatic histone lysine methyltransferase 1
Database Link:	<a href="#">Entrez Gene 79813 Human Q9H9B1</a>



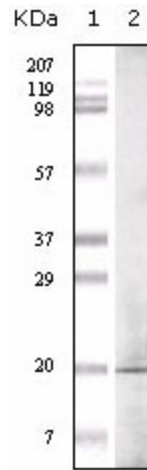
[View online »](#)

**Background:**

Glucagon-like peptide-1 (GLP-1) is an incretin hormone secreted from enteroendocrine L cells in response to ingested nutrients. The closely related peptides glucagon-like peptide (GLP-1) and glucagon have opposing effects on blood glucose. GLP-1 induces glucose-dependent insulin secretion in the pancreas, while glucagon stimulates gluconeogenesis and glycogenolysis in the liver. Glucagon is processed from a large precursor, proglucagon, in a tissue-specific manner in pancreatic alpha-cells. The identification of a hybrid peptide acting as both a GLP-1 agonist and a glucagon antagonist would provide a novel approach for the treatment of type 2 diabetes.

**Synonyms:**

EUHMTASE1, GLP, KIAA1876, KMT1D, Eu-HMTase1, G9a-like protein 1, GLP, GLP1, H3-K9-HMTase 5

**Product images:**

Western blot analysis using GLP mouse mAb against GLP recombinant protein.