

Product datasheet for **AM06111PU-N**

Eph receptor A1 (EPHA1) Mouse Monoclonal Antibody [Clone ID: 5D2]

Product data:

Product Type:	Primary Antibodies
Clone Name:	5D2
Applications:	ELISA, IHC, WB
Recommended Dilution:	Western Blot: 1/500-1/2000. Immunofluorescence: 1/200-1/1000. ELISA: 1/10000.
Reactivity:	Human
Host:	Mouse
Isotype:	IgG1
Clonality:	Monoclonal
Immunogen:	Purified recombinant fragment of EphA1 expressed in E. Coli.
Specificity:	This antibody recognizes Human EphA1. Other species not tested.
Formulation:	PBS State: Purified State: Liquid purified IgG fraction Preservative: 0.03% Sodium Azide
Conjugation:	Unconjugated
Storage:	Store undiluted at 2-8°C for one month or (in aliquots) at -20°C for longer. Avoid repeated freezing and thawing.
Stability:	Shelf life: one year from despatch.
Predicted Protein Size:	108 kDa
Gene Name:	EPH receptor A1
Database Link:	Entrez Gene 2041 Human P21709



[View online »](#)

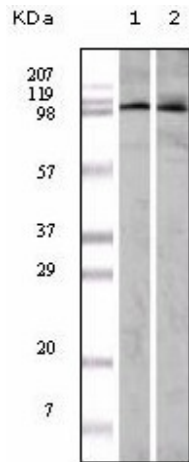
Background:

EPH receptor A1 (EphA1), with 976-amino acid protein(about 107 kDa), belongs to the ephrin receptor subfamily of the protein-tyrosine kinase family. The Eph subfamily represents the largest group of receptor protein tyrosine kinases identified to date and their ligands, the ephrins, can be subdivided into two major subclasses, ephrin-A and ephrin-B. Interaction of Eph receptor tyrosine kinases with their membrane bound ephrin ligands initiates bidirectional signaling events that regulate cell migratory and adhesive behavior, particularly in the nervous system. They have been implicated in various developmental processes, including axonal guidance, angiogenesis, morphogenesis and carcinogenesis.

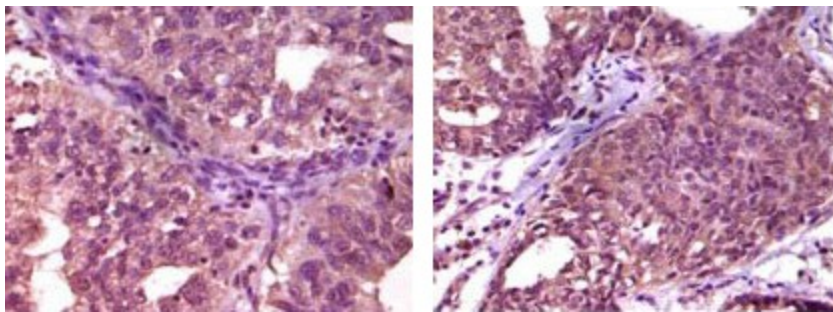
Synonyms:

Ephrin type-A receptor 1, EPH, EPHT, EPHT1

Product images:



Western blot analysis using EphA1 mouse mAb against A549 (1) and HeLa (2) cell lysate.



Immunohistochemical analysis of paraffin-embedded human ovary carcinoma (left) and breast carcinoma (right), showing cytoplasmic localization using EphA1 mouse mAb with DAB staining.