

Product datasheet for **AM06104SU-N**

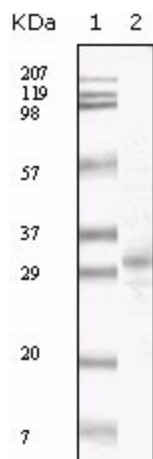
ORF26 ORF26 Mouse Monoclonal Antibody [Clone ID: 2F6B8]

Product data:

Product Type:	Primary Antibodies
Clone Name:	2F6B8
Applications:	WB
Recommended Dilution:	Western Blot: 1/500 - 1/2000. ELISA: 1/10000.
Reactivity:	Kaposi-Sarkom-Herpesvirus
Host:	Mouse
Isotype:	IgG1
Clonality:	Monoclonal
Immunogen:	Purified recombinant fragment of KSHV ORF26 expressed in E. Coli.
Specificity:	This antibody reacts to KSHV ORF26.
Formulation:	State: Ascites State: Ascitic fluid containing 0.03% sodium azide.
Conjugation:	Unconjugated
Storage:	Store the antibody undiluted at 2-8°C for one month or (in aliquots) at -20°C for longer. Avoid repeated freezing and thawing.
Stability:	Shelf life: one year from despatch.
Database Link:	Q2HRA6
Background:	Kaposi's sarcoma-associated herpesvirus (KSHV) belongs to the gamma-(2)-herpesvirus subfamily and has been closely linked to the Kaposi's sarcoma, primary effusion lymphoma (PEL) and multicentric Castleman's disease. The genome of KSHV is 165-170 kb and contains at least 88 open reading frames. KSHV ORF26 open reading frames are juxtaposed and span from nucleotide (nt) 46933 to 47850 of the virus genome. Akula et al (2003) report it acts as a Capsid protein.
Synonyms:	KSHV, Human gammaherpesvirus 8, HHV-8



[View online »](#)

Product images:

Western blot analysis using KSHV ORF26 mouse mAb against TPA induced BCBL-1 cell lysate.