

## Product datasheet for **AM06100SU-N**

### Rb (RB1) Mouse Monoclonal Antibody [Clone ID: 7E4B8]

#### Product data:

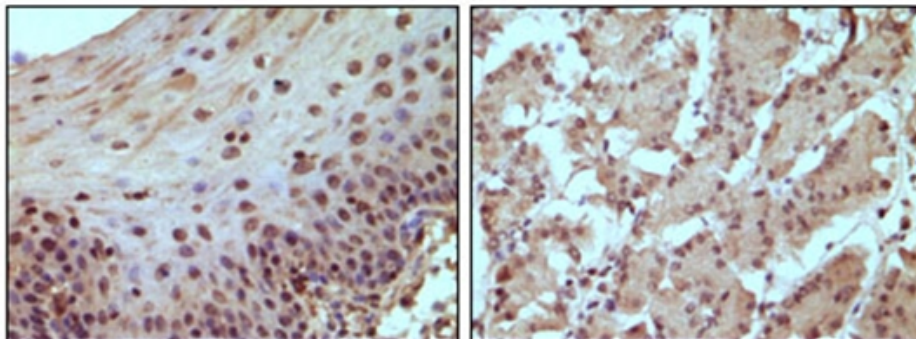
Product Type:	Primary Antibodies
Clone Name:	7E4B8
Applications:	ELISA, IHC
Recommended Dilution:	<b>ELISA:</b> Propose dilution 1/10000. <b>Immunohistochemistry on Paraffin Sections:</b> 1/200 - 1/1000.
Reactivity:	Human
Host:	Mouse
Isotype:	IgG1
Clonality:	Monoclonal
Immunogen:	Purified recombinant fragment of Human RB expressed in E. Coli.
Formulation:	State: Ascites State: Ascitic fluid Preservative: 0.03% Sodium Azide
Conjugation:	Unconjugated
Storage:	Store the antibody undiluted at 2-8°C for one month or (in aliquots) at -20°C for longer. Avoid repeated freezing and thawing.
Stability:	Shelf life: one year from despatch.
Gene Name:	RB transcriptional corepressor 1
Database Link:	<a href="#">Entrez Gene 5925 Human P06400</a>
Background:	The Rb protein regulates differentiation, apoptosis, and cell cycle control by coordinating the cell cycle at G1-S with transcriptional machinery. During G1, cyclin D-dependent kinase-mediated phosphorylation of Rb at Ser-795 marks the conversion of Rb from a transcriptionally repressive, hypophosphorylated state to an inactive, phosphorylated state, which may be sustained through mitosis by differential phosphorylation of up to 16 putative serine or threonine residues. Pediatric cancer retinoblastoma and the formation of other human tumors can be attributed to mutations in the retinoblastoma tumor suppressor gene(Rb).



[View online »](#)

Synonyms: Retinoblastoma 1, Rb, p105-Rb, pRb, pp110, OSRC

**Product images:**



Immunohistochemical staining of paraffin-embedded human normal esophagus (A) and stomach (B) tissue, showing nucleus localization using Rb antibody Cat.-No AM06100SU-N with DAB staining.