

Product datasheet for **AM06099PU-N**

Chk1 (CHEK1) Mouse Monoclonal Antibody [Clone ID: 2G1D5]

Product data:

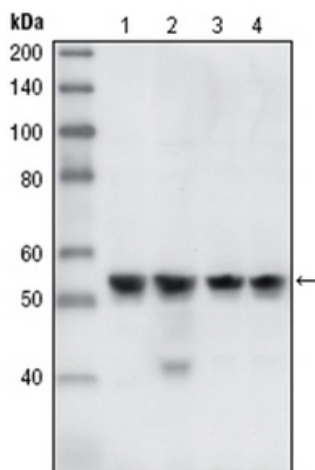
| | |
|-------------------------|---|
| Product Type: | Primary Antibodies |
| Clone Name: | 2G1D5 |
| Applications: | ELISA, WB |
| Recommended Dilution: | Western Blot: 1/500 - 1/2000. ELISA: 1/10000. |
| Reactivity: | Human, Mouse |
| Host: | Mouse |
| Isotype: | IgG1 |
| Clonality: | Monoclonal |
| Immunogen: | Purified recombinant fragment of CHK1 expressed in E. Coli. |
| Formulation: | PBS State: Purified State: Liquid purified IgG fraction Preservative: 0.03% Sodium Azide |
| Conjugation: | Unconjugated |
| Storage: | Store the antibody undiluted at 2-8°C for one month or (in aliquots) at -20°C for longer. Avoid repeated freezing and thawing. |
| Stability: | Shelf life: one year from despatch. |
| Predicted Protein Size: | 56 kDa |
| Gene Name: | checkpoint kinase 1 |
| Database Link: | Entrez Gene 1111 Human O14757 |
| Background: | CHK1, also known as CHEK1, it is a kinase that phosphorylates cdc25, an important phosphatase in cell cycle control, particularly for entry into mitosis. Cdc25, when phosphorylated on serine 216 by chk1 becomes bound by an adaptor protein in the cytoplasm. Therefore it is inhibited from removing the inhibiting phosphate from MPF (mitotic/maturation promoting factor) added by Wee1. Consequently, a cell is prevented from entering mitosis. Chk1 can also phosphorylate p53 at Ser20 in vitro. |



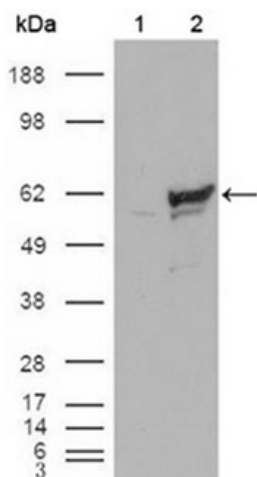
[View online »](#)

Synonyms: CHEK1, CHEK-1

Product images:



Western blot analysis using CHK1 antibody Cat.-No AM06099PU-N against A431 (Lane 1), HeLa (Lane 2), NIH/3T3 (Lane 3) and K562 (Lane 4) cell lysate.



Western blot analysis using CHK1 antibody Cat.-No AM06099PU-N against HEK293T cells transfected with the pCMV6-ENTRY control (Lane 1) and pCMV6-ENTRY CHK1 cDNA (Lane 2).