

## Product datasheet for **AM06098PU-N**

### ALB Mouse Monoclonal Antibody [Clone ID: 3H6]

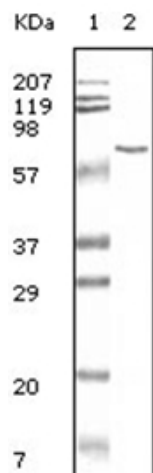
#### Product data:

Product Type:	Primary Antibodies
Clone Name:	3H6
Applications:	ELISA, WB
Recommended Dilution:	<b>Western Blot:</b> 1/500 - 1/2000. <b>ELISA:</b> 1/10000.
Reactivity:	Bovine
Host:	Mouse
Isotype:	IgG1
Clonality:	Monoclonal
Immunogen:	Bovine Serum Albumin.
Specificity:	This antibody is a good reagent that may be used for the development of detection assay in ELISA or Western blot to test the remaining BSA for clinical products <i>In Vivo</i> or research products <i>In Vitro</i> .
Formulation:	PBS State: Purified State: Liquid purified IgG fraction Preservative: 0.03% Sodium Azide
Conjugation:	Unconjugated
Storage:	Store the antibody undiluted at 2-8°C for one month or (in aliquots) at -20°C for longer. Avoid repeated freezing and thawing.
Stability:	Shelf life: one year from despatch.
Database Link:	<a href="#">Entrez Gene 280717 Bovine P02769</a>
Background:	Bovine Serum Albumin (BSA) is used in variety of laboratories products which contain BSA as a stabilizer. BSA could be detected for the indication of remains of chemical derivatives from animal products.
Synonyms:	ALB, BSA, HSA, Serum Albumin



[View online »](#)

## Product images:



Western blot analysis using BSA antibody Cat.-No AM06098PU-N against BSA.