

Product datasheet for **AM06096PU-N**

MCL1 Mouse Monoclonal Antibody [Clone ID: 8C6 (8C6D4B1)]

Product data:

Product Type:	Primary Antibodies
Clone Name:	8C6 (8C6D4B1)
Applications:	ELISA, IF, IHC, WB
Recommended Dilution:	ELISA: 1/10000. Western Blotting: 1/500 - 1/2000. Immunofluorescence: 1/200 - 1/1000. Immunohistochemistry on Paraffin Sections: 1/200 - 1/1000.
Reactivity:	Human
Host:	Mouse
Isotype:	IgG1
Clonality:	Monoclonal
Immunogen:	Purified recombinant fragment of Human MCL-1 expressed in E. Coli.
Specificity:	This monoclonal antibody detected a 37 kDa MCL1 in BCBL-1 cell lysate.
Formulation:	PBS State: Purified State: Liquid purified IgG fraction Preservative: 0.03% Sodium Azide
Conjugation:	Unconjugated
Storage:	Store the antibody undiluted at 2-8°C for one month or (in aliquots) at -20°C for longer. Avoid repeated freezing and thawing.
Stability:	Shelf life: one year from despatch.
Gene Name:	myeloid cell leukemia 1
Database Link:	Entrez Gene 4170 Human Q07820



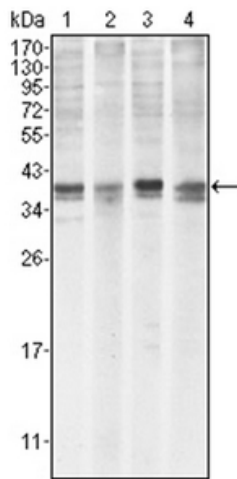
[View online »](#)

Background:

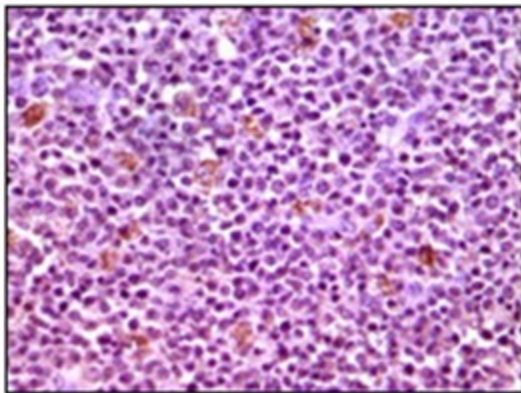
Mcl-1 (Myeloid cell leukemia-1) is Bcl-2-related and was identified as an early-induction gene that increased in expression during the differentiation of human myeloblastic leukemia cell ML-1, or exposure to different DNA damaging agents. The level of Mcl-1 is decreased in peripheral B lymphocytes undergoing apoptosis following treatment with apoptotic stimuli such as TGF-alpha 1 and forskolin. Expression of Mcl-1 is able to delay apoptosis induced by over-expression of c-myc in CHO 5AHSmyc cells. In hematopoietic FDC-P1 cells, Mcl-1 interacts with another Bcl-2-related protein, Bax, and prolongs cell viability after treatment with different apoptotic reagents.

Synonyms:

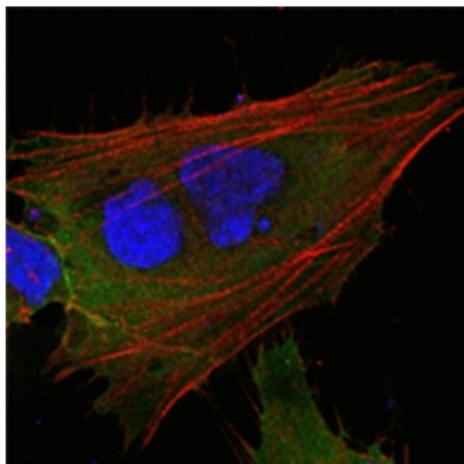
BCL2L3, Bcl-2-like protein 3, mcl1/EAT, EAT, r004

Product images:


Western blot analysis using MCL1 antibody Cat.-No AM06096PU-N against Hela (Lane 1), BCBL-1 (Lane 2), Jurkat (Lane 3) and HL60 (Lane 4) cell lysate.



Immunohistochemical analysis of paraffin-embedded human lymphnode tissues using MCL1 antibody Cat.-No AM06096PU-N with DAB staining.



Confocal Immunofluorescence analysis of HepG2 cells using MCL1 antibody Cat.-No AM06096PU-N (green). Red: Actin filaments have been labeled with DY-554 phalloidin. Blue: DRAQ5 fluorescent DNA dye.