

Product datasheet for **AM06093PU-N**

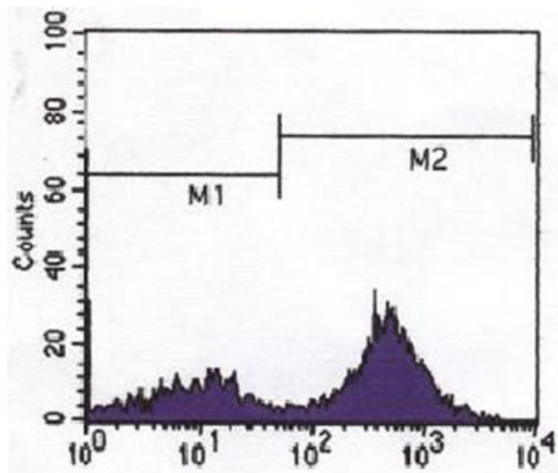
CD247 Mouse Monoclonal Antibody [Clone ID: 4D10A6]

Product data:

Product Type:	Primary Antibodies
Clone Name:	4D10A6
Applications:	ELISA, FC
Recommended Dilution:	ELISA: 1/10000. Flow Cytometry: 1/200 - 1/1000.
Reactivity:	Human
Host:	Mouse
Isotype:	IgG2a
Clonality:	Monoclonal
Immunogen:	Purified recombinant fragment of Human CD3 expressed in E. Coli.
Specificity:	Recognizes CD3
Formulation:	State: Lyophilized State: Lyophilized from a 0.2 µm filtered solution in PBS.
Reconstitution Method:	Restore with 1 ml of sterile deionized water to make the concentration of 0.5 mg/ml in PBS, pH7.2.
Conjugation:	Unconjugated
Storage:	Store the antibody undiluted at 2-8°C for one month or (in aliquots) at -20°C for longer. Avoid repeated freezing and thawing.
Stability:	Shelf life: one year from despatch.
Gene Name:	CD247 molecule
Database Link:	Entrez Gene 919 Human P20963
Background:	CD3 is a component of T cell surface receptor (TCR), it contains 5 invariable chains: gamma-, delta-, epsilon-, and zeta/eta. Clevers et al. (1988) showed the TCR/CD3 complex consists of either a TCR alpha/beta or TCR gamma/delta heterodimer coexpressed at the cell surface with the invariant subunits. CD3 is responsible for the signal transduction of the TCR.
Synonyms:	T3Z, TCRZ, CD3 zeta chain



[View online »](#)

Product images:

Flow Cytometric analysis CD3 expressed in Human peripheral blood cells.