

Product datasheet for **AM06092SU-N**

ZCCHC3 Mouse Monoclonal Antibody [Clone ID: 3B11H2]

Product data:

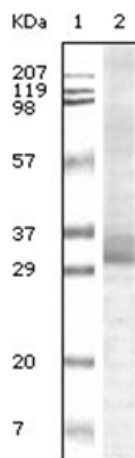
Product Type:	Primary Antibodies
Clone Name:	3B11H2
Applications:	IHC, WB
Recommended Dilution:	ELISA: 1/10000. Western Blot: 1/500 - 1/2000. Immunohistochemistry on Paraffin Sections: 1/200 - 1/1000.
Reactivity:	Human
Host:	Mouse
Isotype:	IgG1
Clonality:	Monoclonal
Immunogen:	Purified recombinant fragment of Human Trim5 alpha expressed in E. Coli.
Formulation:	State: Ascites State: Ascitic fluid Preservative: 0.03% Sodium Azide
Conjugation:	Unconjugated
Storage:	Store the antibody undiluted at 2-8°C for one month or (in aliquots) at -20°C for longer. Avoid repeated freezing and thawing.
Stability:	Shelf life: one year from despatch.
Gene Name:	zinc finger CCHC-type containing 3
Database Link:	Entrez Gene 85364 Human Q9NUD5
Background:	TRIM5-alpha is a protein that is found in the cells of many mammals and fends of various retrovirus infections. It protects monkeys from infection with HIV-1, and humans from infection with some other viruses. If a retrovirus has entered a cell, it needs to shed its capsid in order to reversely transcribe its genes, so that they can be expressed by the host cell. It is believed that TRIM5 alpha, which is present in the cytoplasm, somehow recognizes the capsid and blocks its shedding, thereby stopping the virus in its tracks. It thus represents an intracellular defense completely separate from the rest of the body's immune system.



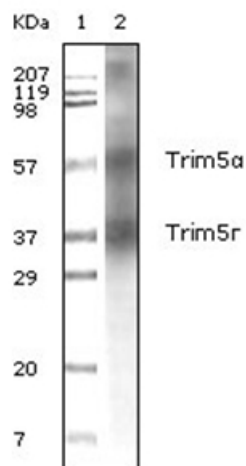
[View online »](#)

Synonyms: C20orf99

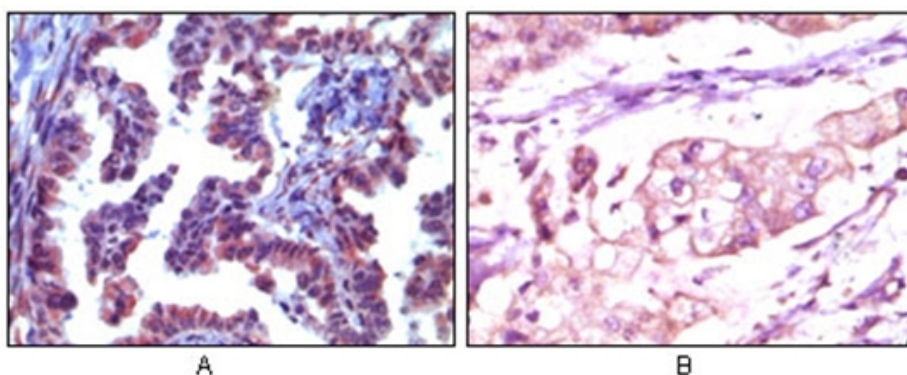
Product images:



Western blot analysis using Trim5a antibody Cat.-No AM06092SU-N antibody against truncated Trim5a recombinant protein.



Western blot analysis using Trim5a antibody Cat.-No AM06092SU-N antibody against human breast carcinoma tissue lysate.



Immunohistochemical analysis of paraffin-embedded human metastatic adenocarcinoma (A) and stomach adenocarcinoma (B), showing cytoplasmic localization using Trim5a antibody Cat.-No AM06092SU-N with AEC staining (A) and DAB staining (B).