

## Product datasheet for **AM06091PU-N**

### CD10 (MME) Mouse Monoclonal Antibody [Clone ID: 2A1H5E1]

#### Product data:

Product Type:	Primary Antibodies
Clone Name:	2A1H5E1
Applications:	IHC
Recommended Dilution:	<b>ELISA:</b> 1/10000. <b>Immunohistochemistry on Paraffin Sections:</b> 1/200 - 1/1000.
Reactivity:	Human
Host:	Mouse
Isotype:	IgG2b
Clonality:	Monoclonal
Immunogen:	Purified recombinant fragment of Human CD-10 expressed in E. Coli.
Specificity:	Recognizes CD10
Formulation:	PBS State: Purified State: Liquid purified IgG fraction Preservative: 0.03% Sodium Azide
Conjugation:	Unconjugated
Storage:	Store the antibody undiluted at 2-8°C for one month or (in aliquots) at -20°C for longer. Avoid repeated freezing and thawing.
Stability:	Shelf life: one year from despatch.
Gene Name:	membrane metallo-endorpeptidase
Database Link:	<a href="#">Entrez Gene 4311 Human P08473</a>



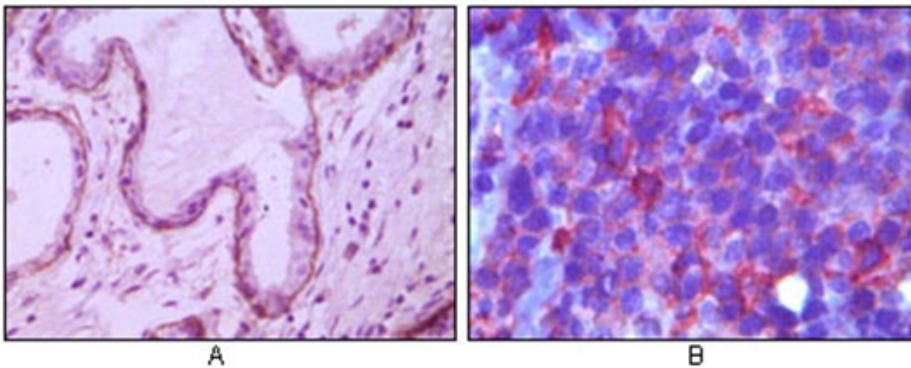
[View online »](#)

**Background:**

CD10 is a 100kDa glycoprotein, also designated Common Acute Lymphocytic Leukemia Antigen (CALLA). It is a cell surface enzyme with neutral metalloendopeptidase activity which inactivates a variety of biologically active peptides. CD10 is expressed on the cells of lymphoblastic, Burkitt's, and follicular germinal center lymphomas, and on cells from patients with chronic myelocytic leukemia (CML). It is also expressed on the surface of normal early lymphoid progenitor cells, immature B cells within adult bone marrow and germinal center B cells within lymphoid tissue. CD10 is also present on breast myoepithelial cells, bile canaliculi, fibroblasts, with especially high expression on the brush border of kidney and gut epithelial cells.

**Synonyms:**

MME, EPN, Neutral endopeptidase 24.11, Neutral endopeptidase, NEP, Enkephalinase, Atriopeptidase, CALLA

**Product images:**

Immunohistochemical analysis of paraffin-embedded human breast ductal myoepithelium (A) and lymph tissue (B), showing cytoplasmic (A) and membrane (B) localization using CD10 antibody Cat.-No AM06091PU-N with DAB staining (A) and AEC staining (B).