

Product datasheet for **AM06085SU-N**

K8 (K8 alpha) Mouse Monoclonal Antibody [Clone ID: 8C12G10G1]

Product data:

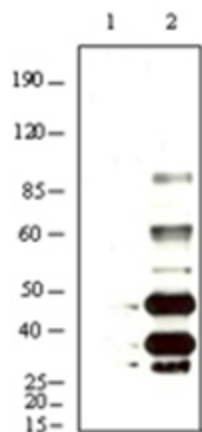
Product Type:	Primary Antibodies
Clone Name:	8C12G10G1
Applications:	IF, WB
Recommended Dilution:	ELISA: 1/10000. Western Blot: 1/500 - 1/2000. Immunofluorescence: 1/200 - 1/1000. Immunohistochemistry: 1/200 - 1/1000.
Reactivity:	Kaposi-Sarkom-Herpesvirus
Host:	Mouse
Isotype:	IgG2a
Clonality:	Monoclonal
Immunogen:	Purified recombinant fragment of KSHV K8 α expressed in E. Coli.
Specificity:	This antibody recognizes KSHV K8 alpha
Formulation:	State: Ascites State: Ascitic fluid Preservative: 0.03% Sodium Azide
Conjugation:	Unconjugated
Storage:	Store the antibody undiluted at 2-8°C for one month or (in aliquots) at -20°C for longer. Avoid repeated freezing and thawing.
Stability:	Shelf life: one year from despatch.
Database Link:	Q2HR82
Background:	Kaposi's sarcoma-associated herpesvirus (KSHV) belongs to the gamma-(2)-herpesvirus subfamily and has been closely linked to the Kaposi's sarcoma, primary effusion lymphoma (PEL) and multicentric Castleman's disease. The genome of KSHV is 165-170 kb and contains at least 88 open reading frames. KSHV K8 and K8.1 open reading frames are juxtaposed and span from nucleotide (nt) 74850 to 76695 of the virus genome. A K8 pre-mRNA overlaps the entire K8.1 coding region, and alternative splicing of KSHV K8 and K8.1 pre-mRNAs each produces three isoforms (α , β , and γ) of the mRNAs.



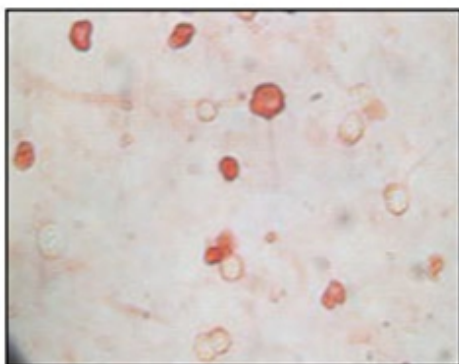
[View online »](#)

Synonyms: KSHV K8, Human gammaherpesvirus 8, HHV-8

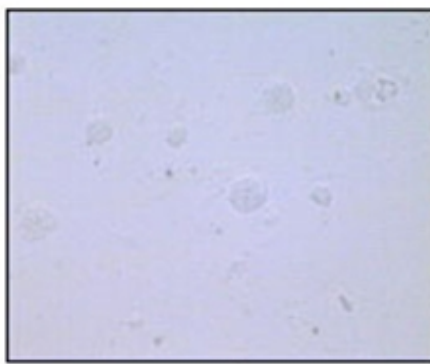
Product images:



Western blot analysis using KSHV K8 alpha antibody Cat.-No AM06085SU-N against BCBL-1 (Lane 1) and TPA induced BCBL-1 (Lane 2) cell lysate.



A



B

Immunocytochemistry analysis of TPA induced BCBL-1 cells (A) and uninduced BCBL-1 cells (B) using KSHV K8 alpha antibody Cat.-No AM06085SU-N with AEC staining.