

Product datasheet for **AM06084PU-N**

MCP1 (CCL2) Mouse Monoclonal Antibody [Clone ID: 1A7B8]

Product data:

Product Type:	Primary Antibodies
Clone Name:	1A7B8
Applications:	ELISA, WB
Recommended Dilution:	Western Blot: 1/500 - 1/2000. ELISA: 1/10000.
Reactivity:	Human
Host:	Mouse
Isotype:	IgG1
Clonality:	Monoclonal
Immunogen:	Purified recombinant fragment of Human MCP-1 expressed in E. Coli.
Formulation:	PBS State: Purified State: Liquid purified IgG fraction Preservative: 0.03% Sodium Azide
Conjugation:	Unconjugated
Storage:	Store the antibody undiluted at 2-8°C for one month or (in aliquots) at -20°C for longer. Avoid repeated freezing and thawing.
Stability:	Shelf life: one year from despatch.
Gene Name:	C-C motif chemokine ligand 2
Database Link:	Entrez Gene 6347 Human P13500



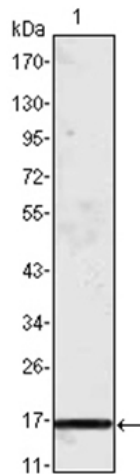
[View online »](#)

Background:

Monocyte chemoattractant protein-1 (MCP-1) is a member of the chemokine-beta family of cytokines. The protein is structurally related to the CXC subfamily of cytokines. Members of this subfamily are characterized by two cysteines separated by a single amino acid. This cytokine displays chemotactic activity for monocytes and basophils but not for neutrophils or eosinophils. It has been implicated in the pathogenesis of diseases characterized by monocytic infiltrates, like psoriasis, rheumatoid arthritis and atherosclerosis. It binds to chemokine receptors CCR2 and CCR4. It may play an important role in the initiation and/or progression of pulmonary hypertension (PH). Blockade of a systemic MCP-1 signal pathway in vivo may prevent PH.

Synonyms:

C-C motif chemokine 2, SCYA2, MCAF, Small-inducible cytokine A2, MCP-1, HC11, HC-11

Product images:

Western blot analysis using MCP1 antibody Cat.-No AM06084PU-N against truncated MCP-1 recombinant protein.