

## Product datasheet for **AM06082SU-N**

### IL16 Mouse Monoclonal Antibody [Clone ID: 5D8]

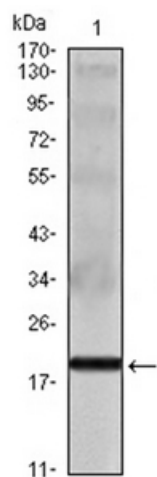
#### Product data:

Product Type:	Primary Antibodies
Clone Name:	5D8
Applications:	ELISA, WB
Recommended Dilution:	<b>Western Blot:</b> 1/500 - 1/2000. <b>ELISA:</b> 1/10000.
Reactivity:	Human
Host:	Mouse
Isotype:	IgG1
Clonality:	Monoclonal
Immunogen:	Purified recombinant fragment of Human IL-16 expressed in E. Coli.
Formulation:	State: Ascites State: Ascitic fluid Preservative: 0.03% Sodium Azide
Conjugation:	Unconjugated
Storage:	Store the antibody undiluted at 2-8°C for one month or (in aliquots) at -20°C for longer. Avoid repeated freezing and thawing.
Stability:	Shelf life: one year from despatch.
Gene Name:	interleukin 16
Database Link:	<a href="#">Entrez Gene 3603 Human Q14005</a>
Background:	Interleukin-16, also known as lymphocyte chemoattractant factor (LCF), is a chemotactic cytokine that stimulates a migratory response in CD4+ lymphocytes, monocytes, and eosinophils through binding to the CD4 receptor . IL-16 induces human T-lymphocyte expression of interleukin 2 receptor and upregulates major histocompatibility complex II molecules on resting human T lymphocyte. It is able to render CD4+ T cells unresponsive to TCR/CD3 stimuli. Moreover, IL-16 inhibits the replication of T cell and monocyte tropic HIV strains in vitro.
Synonyms:	IL-16, LCF



[View online »](#)

## Product images:



Western blot analysis using IL16 antibody Cat.-No AM06082SU-N against IL16 recombinant protein.