

## Product datasheet for **AM06073PU-N**

### **BCL10 Mouse Monoclonal Antibody [Clone ID: 4F8]**

#### **Product data:**

Product Type:	Primary Antibodies
Clone Name:	4F8
Applications:	ELISA, FC, IF, IHC, WB
Recommended Dilution:	<b>ELISA:</b> 1/10000. <b>Western Blot:</b> 1/500 - 1/2000. <b>Flow Cytometry:</b> 1/200 - 1/400. <b>Immunofluorescence:</b> 1/200 - 1/1000. <b>Immunohistochemistry on Paraffin Sections:</b> 1/200 - 1/1000.
Reactivity:	Human, Mouse
Host:	Mouse
Isotype:	IgG1
Clonality:	Monoclonal
Immunogen:	Purified recombinant fragment of Human BCL-10 expressed in E. Coli.
Formulation:	PBS State: Purified State: Liquid purified IgG fraction Preservative: 0.03% Sodium Azide
Conjugation:	Unconjugated
Storage:	Store the antibody undiluted at 2-8°C for one month or (in aliquots) at -20°C for longer. Avoid repeated freezing and thawing.
Stability:	Shelf life: one year from despatch.
Gene Name:	B-cell CLL/lymphoma 10
Database Link:	<a href="#">Entrez Gene 8915 Human O95999</a>



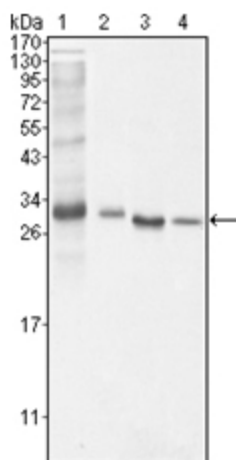
[View online »](#)

**Background:**

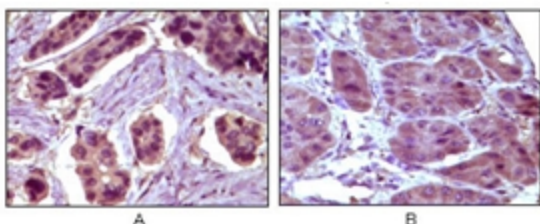
Bcl-10 (B-cell CLL/lymphoma 10), also known as CLAP, Me10, CIPER, c-E10, CARMEN. Entrez Protein NP\_003912. It is a protein containing a caspase recruitment domain (CARD). It plays an important role in apoptosis and activating NF-kappaB. The research suggested that it interacted with other CARD domain containing proteins including CARD9, 10, 11 and 14, which were thought to function as upstream regulators in NF-kappaB signaling. Bcl-10 is found to form a complex with MALT1 which encoded by another gene known to be translocated in MALT lymphoma. MALT1 and Bcl-10 are thought to synergize in the activation of NF-kappaB, and the deregulation of either of them may contribute to the same pathogenetic process that leads to the malignancy.

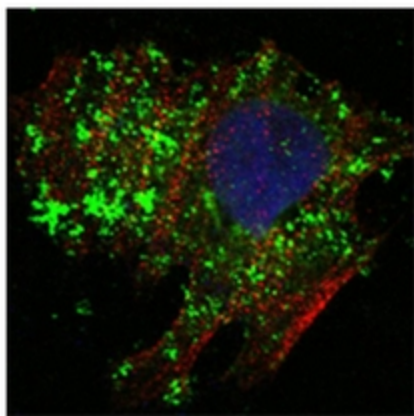
**Synonyms:**

BCL10, CIPER, CLAP, cCARMEN, mE10, c-E10, hCLAP

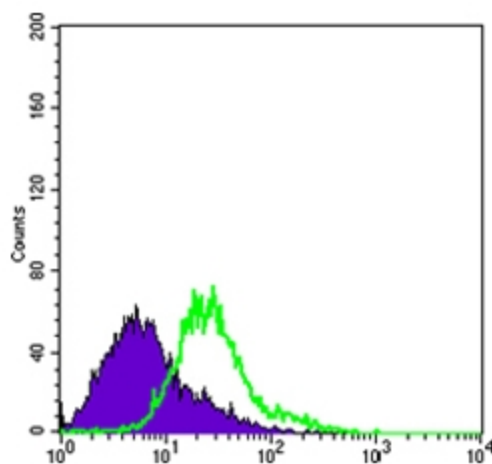
**Product images:**


Western blot analysis using BCL10 antibody Cat.-No AM06073PU-N against NIH/3T3 (1), HeLa (2), MCF-7 (3) and Jurkat (4) cell lysate.





Confocal immunofluorescence analysis of HeLa cells using BCL10 antibody Cat-No AM06073PU-N (green). Red: Actin filaments have been labeled with Alexa Fluor-555 phalloidin. Blue: DRAQ5 fluorescent DNA dye.



Flow cytometric analysis of HeLa cells using BCL10 antibody Cat.-No AM06073PU-N (green) and negative control (purple).