

Product datasheet for **AM06071SU-N**

Nucleophosmin (NPM1) Mouse Monoclonal Antibody [Clone ID: 7H10B9]

Product data:

Product Type:	Primary Antibodies
Clone Name:	7H10B9
Applications:	IF, IHC, WB
Recommended Dilution:	ELISA: 1/10000. Western Blot: 1/500-1/2000. Immunofluorescence: 1/200-1/1000. Immunohistochemistry on Paraffin Sections: 1/200-1/1000.
Reactivity:	Human, Monkey
Host:	Mouse
Isotype:	IgG1
Clonality:	Monoclonal
Immunogen:	Purified recombinant fragment of Human NPM expressed in E. Coli.
Specificity:	This antibody recognizes Human Nucleophosmin. Other species not tested.
Formulation:	State: Ascites State: Ascitic fluid Preservative: 0.03% Sodium Azide
Conjugation:	Unconjugated
Storage:	Store undiluted at 2-8°C for one month or (in aliquots) at -20°C for longer. Avoid repeated freezing and thawing.
Stability:	Shelf life: one year from despatch.
Gene Name:	nucleophosmin (nucleolar phosphoprotein B23, numatrin)
Database Link:	Entrez Gene 4869 Human P06748



[View online »](#)

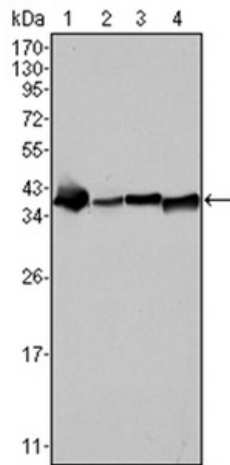
Background:

Nucleophosmin (NPM), also named B23 or NO38, is a major nucleolar protein which is 20 times more abundant in tumor or proliferating cells than in normal resting cells. NPM has been implicated in several distinct cellular functions, including assembly and transport of ribosomes, cytoplasmic/nuclear trafficking, regulation of DNA polymerase alpha activity, centrosome duplication and molecular chaperoning activities. The NPM is also known for its fusion with the anaplastic lymphoma kinase (ALK) receptor tyrosine kinase. The NPM portion contributes to transformation by providing a dimerization domain, which results in activation of the fused kinase.

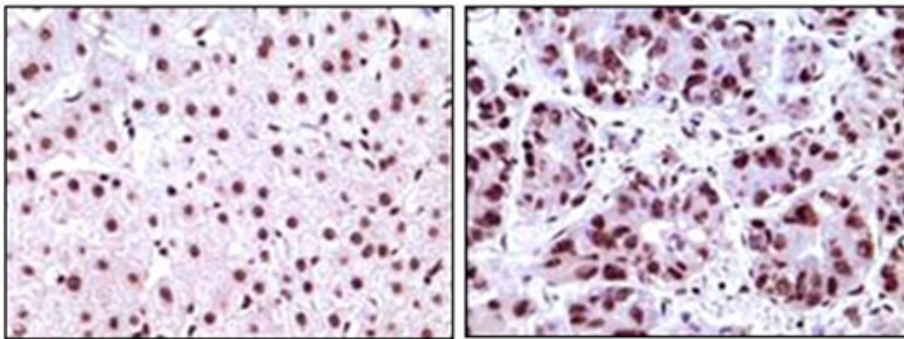
Synonyms:

NPM, NPM1, Numatrin

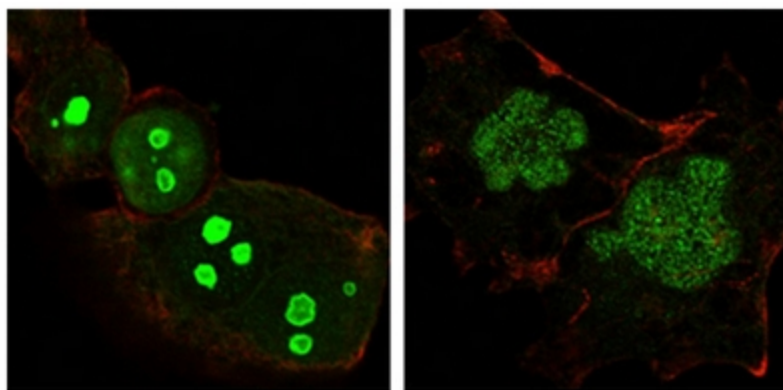
Product images:



Western blot analysis using NPM antibody Cat.-No AM06071SU-N against SMMC-7721 (Lane 1), HepG2 (Lane 2), Hela (Lane 3) and HEK293 (Lane 4) cell lysates.



Immunohistochemical analysis of paraffin-embedded human liver carcinoma tissues, showing nuclear localization using NPM antibody Cat.-No AM06071SU-N with DAB staining.



Confocal Immunofluorescence analysis of HeLa (Left) and NTERA-2 (Right) cells using NPM antibody Cat.-No AM06071SU-N (green). Red: Actin filaments have been labeled with DY-554 phalloidin.