

Product datasheet for **AM06059PU-N**

Scaffold attachment factor B2 (SAFB2) (345-357) Mouse Monoclonal Antibody [Clone ID: 6F7]

Product data:

Product Type:	Primary Antibodies
Clone Name:	6F7
Applications:	IF, IHC, IP, WB
Recommended Dilution:	Immunofluorescence. Immunohistochemistry on Paraffin Sections: 5 µg/ml. Immunoprecipitation. Western Blot.
Reactivity:	Human, Mouse, Monkey
Host:	Mouse
Isotype:	IgG1
Clonality:	Monoclonal
Immunogen:	A synthetic peptide corresponding to amino acids 345-357 of the human HET protein
Specificity:	This antibody detects Scaffold Attachment Factor B (SAFB) at aa 345-357.
Formulation:	PBS, sourced in TCS State: Purified State: Liquid Ig fraction
Concentration:	lot specific
Purification:	Protein G column
Conjugation:	Unconjugated
Storage:	Store the antibody at 2 - 8 °C up to one month or (in aliquots) at -20°C for longer. Avoid repeated freezing and thawing.
Stability:	Shelf life: one year from despatch.
Gene Name:	scaffold attachment factor B2
Database Link:	Entrez Gene 9667 Human Q14151



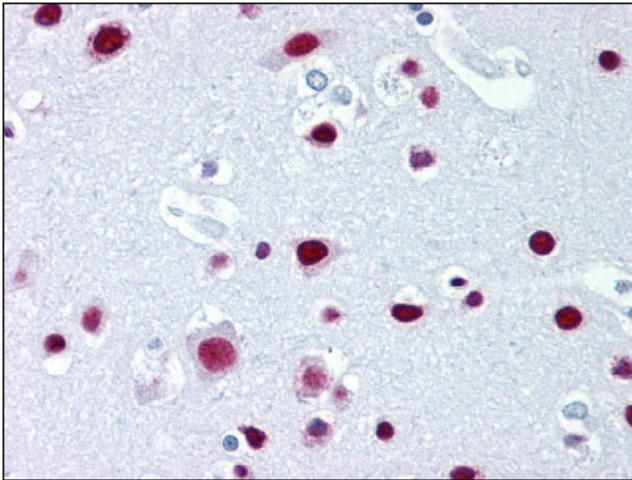
[View online »](#)

Background:

Hsp27 ERE-TATA binding protein (HET)/ Scaffold Attachment Factor-B (SAF-B) is a member of a subset of nuclear matrix proteins that mediate the attachment of chromatin to nuclear protein complexes. The calculated molecular weight of HET/SAF-B is 102 kDa (Accession No. U72355), but on SDS PAGE gels HET/SAF-B runs as an approximately 130 kDa protein. This aberrant migration is due to a large number of charged amino acid residues.

Synonyms:

Scaffold attachment factor B2, SAF-B2, KIAA0138

Product images:

Brain, cortex: Formalin-Fixed Paraffin-Embedded (FFPE)