

Product datasheet for **AM06039PU-N**

CEBP Beta (CEBPB) (39-78) Mouse Monoclonal Antibody [Clone ID: 21A1]

Product data:

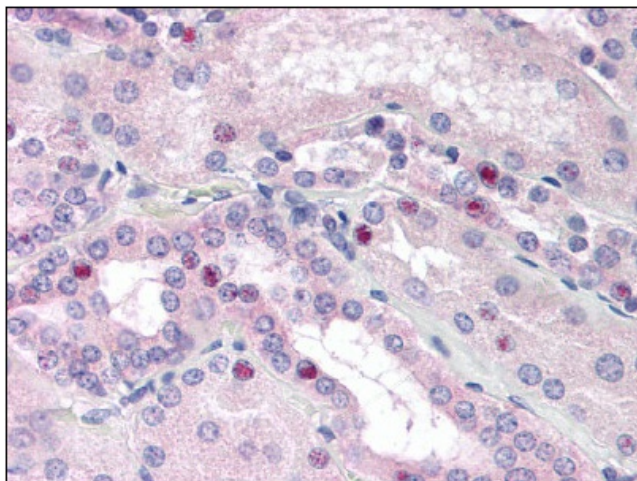
Product Type:	Primary Antibodies
Clone Name:	21A1
Applications:	IHC, IP, WB
Recommended Dilution:	Immunohistochemistry on Paraffin Sections: 10 µg/ml. Immunoprecipitation. Western Blot.
Reactivity:	Human
Host:	Mouse
Isotype:	IgG
Clonality:	Monoclonal
Immunogen:	Purified protein
Specificity:	This antibody detects Ccaat/enhancer Binding Protein Beta (CEBPB). Reported to recognize an epitope on NF-IL6 within amino acids 39-78.
Formulation:	PBS, pH 7.4 without preservatives. State: Azide Free State: Liquid purified Ig fraction
Concentration:	lot specific
Purification:	Protein G Chromatography
Conjugation:	Unconjugated
Storage:	Store the antibody undiluted at 2-8°C for one month or (in aliquots) at -20°C for longer. Avoid repeated freezing and thawing.
Stability:	Shelf life: one year from despatch.
Gene Name:	CCAAT/enhancer binding protein beta
Database Link:	Entrez Gene 1051 Human P17676
Background:	NF-IL6 is a member of the CAAT/enhancer-binding protein (C/EBP) family of transcription factors. It has been shown to directly interact with the retinoblastoma (RB) protein.



[View online »](#)

Synonyms: C/EBP beta, TCF5, LAP, NF-IL6

Product images:



CEBPB Antibody staining of Formalin-Fixed Paraffin-Embedded Human Kidney at 10 ug/ml followed by biotinylated anti-mouse IgG secondary antibody, alkaline phosphatase-streptavidin and chromogen.