

Product datasheet for **AM06017RP-N**

CD59 Mouse Monoclonal Antibody [Clone ID: 1F5]

Product data:

Product Type:	Primary Antibodies
Clone Name:	1F5
Applications:	FC
Recommended Dilution:	Tissue Distribution by Flow Cytometry Analysis: <u>Cell Concentration:</u> 1x10e6 cells per test <u>Antibody Concentration Used:</u> 1.0µg/10e6 cells <u>Cell Source:</u> RBC 100% Lymphocytes 80.2%
Reactivity:	Human
Host:	Mouse
Isotype:	IgG1
Clonality:	Monoclonal
Immunogen:	Mouse pre-B tumour cells (RAW112) <u>Donor:</u> Lewis rat spleen <u>Fusion Partner:</u> S 194/5. XXO. BU-1
Specificity:	This antibody reacts to CD59.
Formulation:	PBS containing 0.02% sodium azide as preservative and EIA grade BSA as a stabilizing protein to bring total protein concentration to 4-5 mg/ml. Label: PE State: Liquid purified Ig fraction Label: R - Phycoerythrin
Concentration:	lot specific
Conjugation:	PE
Storage:	Store the antibody undiluted at 2-8°C. DO NOT FREEZE!
Stability:	Shelf life: one year from despatch.
Gene Name:	CD59 molecule



[View online »](#)

Database Link: [Entrez Gene 966 Human P13987](#)

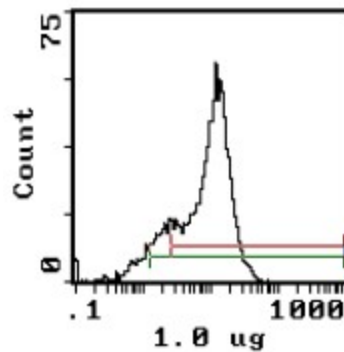
Background: CD59 (also known as HRF20, protectin) is a 20 kDa glycoprotein attached to the plasma membrane by a glycosylphosphatidylinositol (GPI) anchor. It blocks MAC formation in the complement pathway by interfering with C9 membrane insertion and polymerization, but it does not affect the generation of C3 and C5 activation products. CD59 is expressed on several cell types, including leukocytes, endothelial and epithelial cells, erythrocytes, and cells of the central nervous system. CD59 belongs to the Ly6 superfamily of proteins.

Synonyms: MAC-inhibitory protein, Protectin, MEM43 antigen, MIC11, MIN1, MIN2, MIN3, MSK21, MACIF, MAC-IP, MIRL, HRF20, HRF-20

Protein Families: Druggable Genome

Protein Pathways: Complement and coagulation cascades, Hematopoietic cell lineage

Product images:



Cell Source: Lymphocytes