

## Product datasheet for **AM06011PU-N**

### IL1 alpha (IL1A) Mouse Monoclonal Antibody

#### Product data:

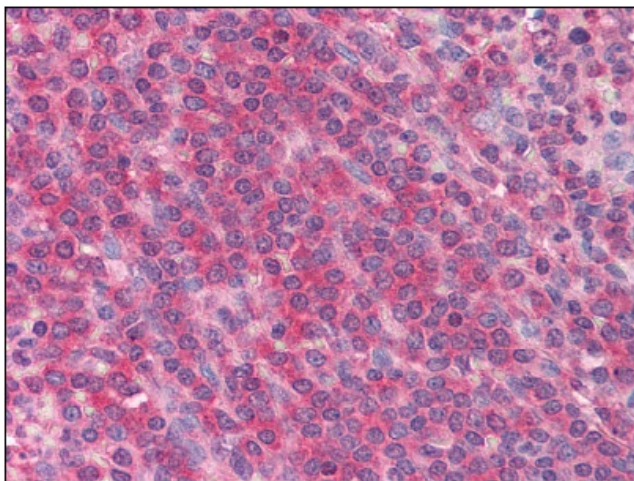
Product Type:	Primary Antibodies
Applications:	ELISA, IHC, WB
Recommended Dilution:	<b>ELISA.</b> <b>Immunohistochemistry on Paraffin Sections:</b> 1/400. <b>Western Blot:</b> 1/500 - 1/1000.
Reactivity:	Human
Host:	Mouse
Isotype:	IgG2a
Clonality:	Monoclonal
Immunogen:	Recombinant human IL1A / IL1 Alpha
Specificity:	This antibody detects Human Interleukin 1 Alpha (IL1A).
Formulation:	State: Ascites State: Unpurified Ascitic fluid Preservative: 0.03% Sodium Azide
Conjugation:	Unconjugated
Storage:	Store undiluted at 2-8°C for one month or (in aliquots) at -20°C for longer. Avoid repeated freezing and thawing.
Stability:	Shelf life: one year from despatch.
Gene Name:	interleukin 1 alpha
Database Link:	<a href="#">Entrez Gene 3552 Human P01583</a>
Background:	Interleukin 1 alpha is synthesized as a 31 kDa promolecule that does not contain a signal sequence. Following proteolytic cleavage, the mature 17 kDa molecule is released as a result of cell injury or apoptosis. IL-1 alpha stimulates bone osteoclast activity, has a role in the modulation of extracellular fluid calcium homeostasis and apoptosis, activates T and B lymphocytes and NK cells, and functions in development. Movement of the IL-1 alpha promolecule to the nucleus in response to endotoxin where it augments transcription of proinflammatory genes has also been documented.



[View online »](#)

Synonyms: IL-1 alpha, IL1F1, IL1A, Hematopoietin-1

**Product images:**



AM06011PU-N IL1A Antibody staining of Formalin-Fixed Paraffin-Embedded Human Spleen at 1/400 after heat-induced antigen retrieval.