

## Product datasheet for **AM06005PU-N**

### **APE1 (APEX1) Mouse Monoclonal Antibody [Clone ID: 2104]**

#### **Product data:**

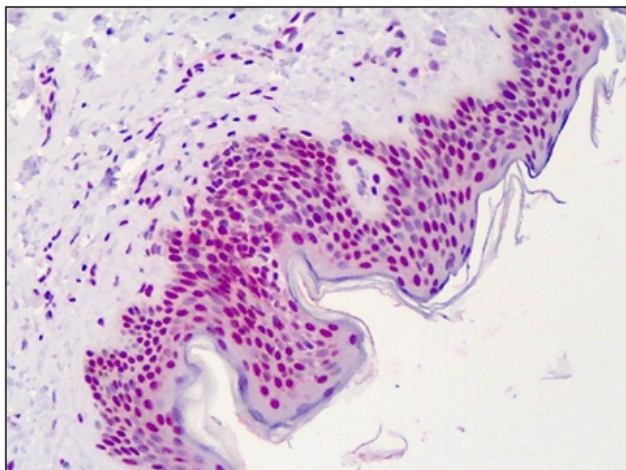
Product Type:	Primary Antibodies
Clone Name:	2104
Applications:	ELISA, IHC, WB
Recommended Dilution:	<b>ELISA.</b> <b>Immunohistochemistry on Paraffin Sections:</b> 20 µg/ml. <b>Western Blot.</b>
Reactivity:	Human
Host:	Mouse
Isotype:	IgG
Clonality:	Monoclonal
Immunogen:	Full length human APE1 purified from E. coli.
Specificity:	This antibody detects APEX Nuclease (multifunctional DNA Repair Enzyme) (APEX) (APEX1).
Formulation:	PBS, pH 7.2 without preservatives State: Purified State: Liquid purified Ig fraction
Concentration:	lot specific
Purification:	Protein G Chromatography
Conjugation:	Unconjugated
Storage:	Upon receipt, store undiluted (in aliquots) at -20°C. Avoid repeated freezing and thawing.
Stability:	Shelf life: one year from despatch.
Gene Name:	apurinic/apyrimidinic endodeoxyribonuclease 1
Database Link:	<a href="#">Entrez Gene 328 Human P27695</a>
Background:	Apurinic / Apyrimidinic Endonuclease (APE 1 or REF 1) is responsible for the incision of DNA at abasic sites during base excision repair. It has also been shown to stimulate the sequence-specific DNA binding activity of Fos-Jun (AP 1) heterodimers. Alterations in APE 1 levels have been described in some cancers.



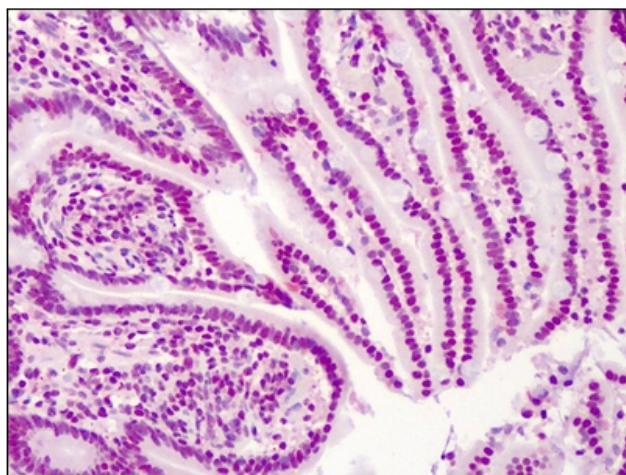
[View online »](#)

Synonyms: APE, APEX, APX, HAP1, REF1, APEN

### Product images:



Human Skin: Formalin-Fixed, Paraffin-Embedded (FFPE)



Human Small Intestine: Formalin-Fixed, Paraffin-Embedded (FFPE)