

Product datasheet for **AM06001PU-N**

AKT3 (119-136) Mouse Monoclonal Antibody [Clone ID: 66C1247.1]

Product data:

Product Type:	Primary Antibodies
Clone Name:	66C1247.1
Applications:	IHC, WB
Recommended Dilution:	Immunohistochemistry on Paraffin Sections: 10 µg/ml. Western Blot: 1 - 2 µg/ml.
Reactivity:	Human, Mouse, Rat, Bovine, Bat, Canine, Chicken, Equine, Monkey, Porcine, Rabbit
Host:	Mouse
Isotype:	IgG1
Clonality:	Monoclonal
Immunogen:	Synthetic peptide corresponding to amino acid residues 119-136 of Human Akt3
Specificity:	This antibody detects V-Akt Murine Thymoma Viral Oncogene Homolog 3 (AKT3) at aa 119-136. Family: Protein Kinase Subfamily: RAC/AKT
Formulation:	PBS, 0.05% BSA, 0.05% sodium azide. Sourced in TCS State: Purified State: Liquid purified Ig fraction
Concentration:	lot specific
Purification:	Protein G Chromatography
Conjugation:	Unconjugated
Storage:	Store undiluted at 2-8°C for one month or (in aliquots) at -20°C for longer. Avoid repeated freezing and thawing.
Stability:	Shelf life: one year from despatch.
Gene Name:	AKT serine/threonine kinase 3
Database Link:	Entrez Gene 10000 Human Q9Y243



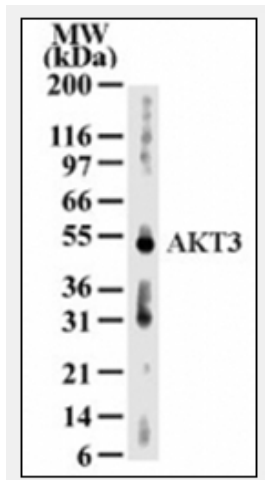
[View online »](#)

Background:

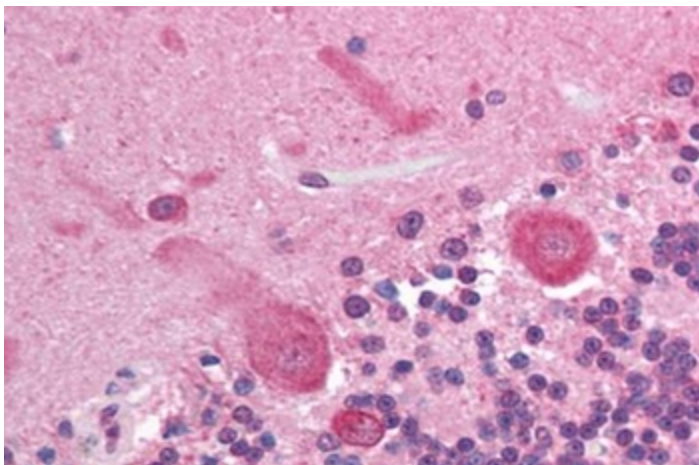
Akt, protein kinase B (PKB), is a serine/threonine kinase which is involved in many cellular signaling pathways and acts as a transducer of many functions initiated by growth factor receptors that activate phosphatidylinositol 3-kinase (PI 3-kinase). The major activity of Akt/PKB is to mediate cell survival. Akt/PKB is also believed to be a critical factor in the genesis of cancer as the tumor suppressor PTEN was found to antagonize PI-3 kinase and Akt/PKB kinase activity. There are 3 known isoforms of this enzyme in mammalian cells (1/alpha, 2/beta and 3/gamma). Akt1, 2 and 3 contain a key regulatory serine phosphorylation site in the carboxy-terminal region of the protein. Akt/PKB phosphorylation is critical for its activity.

Synonyms:

RAC-PK-gamma, Protein kinase B gamma, PKBG, STK-2

Product images:

Western blot analysis for AKT3 using AKT3 Antibody at 2 ug/ml dilution against 30 ug/lane of human kidney lysate.



Formalin-Fixed, Paraffin-Embedded Human Brain tissue stained with AKT3 Antibody at 10 ug/ml after heat-induced antigen retrieval.