

## Product datasheet for **AM05947BT-N**

### HLA Class II DQ Mouse Monoclonal Antibody [Clone ID: FN81]

#### Product data:

Product Type:	Primary Antibodies
Clone Name:	FN81
Applications:	FC, IHC
Recommended Dilution:	<b>Immunohistochemistry on Frozen Sections:</b> ≤ 0.05 µg/ml (1/4000). <i>Recommended Positive Control:</i> Human tonsil. Has been described to work in <b>Flow Cytometry</b> .
Reactivity:	Human
Host:	Mouse
Isotype:	IgG2a
Clonality:	Monoclonal
Immunogen:	Stimulated human B lymphocytes. The antigen is HLA-DQ. The epitope has not been further characterized.
Specificity:	This Monoclonal antibody FN81 recognizes the Human HLA-DQ antigen. <b>Antigen Distribution on Isolated Cells:</b> The HLA DQ antigen is present on approximately 10% of peripheral blood lymphocytes.
Formulation:	PBS, pH 7.2, with 0.05% Kathon as preservative and 5 mg/ml BSA as stabilizer. Label: Biotin State: Lyophilized purified IgG fraction.
Reconstitution Method:	Restore with 0.5 ml distilled water (= Stock solution).
Concentration:	0.2 mg/ml
Purification:	Affinity Chromatography.
Conjugation:	Biotin
Storage:	Store lyophilized at 2-8°C. Stock solution or aliquots of stock solution can be kept frozen at -20°C. Do not freeze working dilutions. Avoid repeated freezing and thawing.
Stability:	Shelf life: one year from despatch.



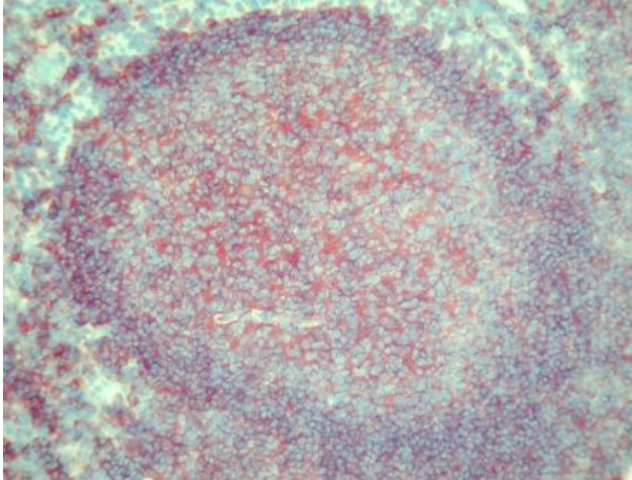
[View online »](#)

**Background:**

HLA-DQ is an HLA class II antigen with homology to murine H-2A. HLA class II antigens are mainly expressed on specialized antigen presenting cells (APCs), dendritic cells, B-cells and macrophages. HLA class II antigen is presented on activated T-cells. HLA class II molecules present exogenously derived antigen to the T-cell receptor (TCR) on CD4+ T lymphocytes. Both chains in HLA-DQ are polymorphic. HLA-DQ is expressed after DR and DP during haematopoietic progenitor cell development. It is strongly expressed in the thymic cortex.

**Synonyms:**

MHC Class II DQ

**Product images:**

AM05947BT-N HLA-DQ antibody staining of Human Tonsil Frozen Section.