

## Product datasheet for **AM05902FC-N**

### Siglec1 Rat Monoclonal Antibody [Clone ID: 3D6.112]

#### Product data:

Product Type:	Primary Antibodies
Clone Name:	3D6.112
Applications:	FC
Recommended Dilution:	<b>Flow Cytometry:</b> Neat-1/5 (The Fc region of monoclonal antibodies may bind non-specifically to cells expressing low affinity Fc receptors).
Reactivity:	Mouse
Host:	Rat
Isotype:	IgG2a
Clonality:	Monoclonal
Immunogen:	Purified Sialoadhesin. Spleen cells from an immunised AO rat were fused with the cells of the Y3 rat myeloma cell line.
Specificity:	This antibody recognizes Mouse CD169, a sialic acid binding site of sialoadhesin.
Formulation:	PBS Label: FITC State: Liquid purified IgG fraction from Tissue Culture Supernatant Stabilizer: 1% BSA Preservative: 0.09% Sodium Azide Label: Fluorescein Isothiocyanate Isomer 1
Concentration:	lot specific
Purification:	Affinity Chromatography on Protein G
Conjugation:	FITC
Storage:	Store undiluted at 2-8°C for one month or (in aliquots) at -20°C for longer. This product is photosensitive and should be protected from light. Should this product contain a precipitate we recommend microcentrifugation before use. Avoid repeated freezing and thawing.
Stability:	Shelf life: one year from despatch.
Gene Name:	sialic acid binding Ig-like lectin 1, sialoadhesin



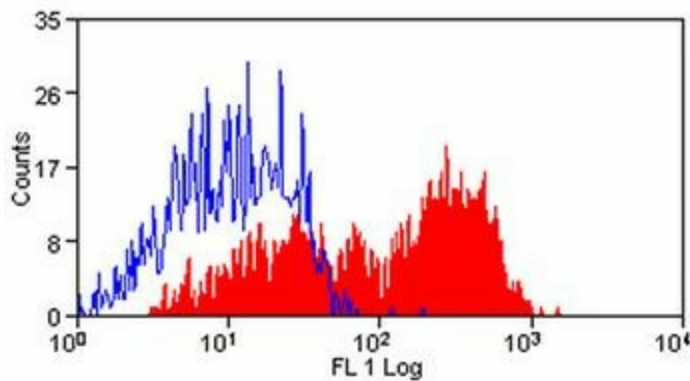
[View online »](#)

**Database Link:** [Entrez Gene 20612 Mouse Q62230](#)

**Background:** Two families of mammalian lectin like adhesion molecules have been shown to bind glycoconjugate ligands in a sialic acid dependent manner: the selectins and the sialoadhesins. The sialoadhesin family has 4 members: CD22, a B cell specific marker; myelin associated glycoprotein (MAG), which is expressed on oligodendrocytes and Schwann cells; CD33, a myeloid differentiation antigen; and sialoadhesin, which is expressed only by a subpopulation of tissue macrophages. Involved in cell-cell interactions, sialoadhesin is structurally related to the 3 other listed members of the sialoadhesin family. CD169 is a sialic acid binding site of sialoadhesin. CD169 is a macrophage receptor expressed on stromal macrophages in many tissues, particularly found in lymph nodes, bone marrow and spleen.

**Synonyms:** Sialoadhesin, Siglec-1

**Product images:**



Mouse Peritoneal Macrophages stained with Rat anti Mouse CD169 Antibody -FITC (Clone 3D6.112)