

## Product datasheet for **AM05901PU-S**

### CD8A Mouse Monoclonal Antibody [Clone ID: CC63]

#### Product data:

Product Type:	Primary Antibodies
Clone Name:	CC63
Applications:	FC, IF, IHC, IP
Recommended Dilution:	<b>Immunohistochemistry on Frozen Sections.</b> <b>Immunohistochemistry on Paraffin Sections.</b> <b>Immunoprecipitation.</b> <b>Immunofluorescence/Immunocytochemistry.</b> <b>Flow Cytometry:</b> Use 10 µl of 1/50 diluted CD8 antibody to label 10 <sup>6</sup> cells in 100 µl.
Reactivity:	Bovine, Goat, Sheep
Host:	Mouse
Isotype:	IgG2a
Clonality:	Monoclonal
Specificity:	This antibody reacts with the Bovine CD8 antigen expressed by a subset of T lymphocytes. The antibody precipitates molecules of 34kD and 38kD under reducing conditions. Clone CC63 has been reported as being suitable for use on Formalin Dichromate (FD5) Fixed Paraffin Embedded tissue with amplification and antigen retrieval techniques (See <i>Gutierrez, M. et al.</i> for details).
Formulation:	PBS State: Purified State: Liquid purified IgG fraction from Tissue Culture Supernatant Preservative: 0.09% Sodium Azide
Concentration:	lot specific
Purification:	Affinity Chromatography on Protein G
Conjugation:	Unconjugated
Storage:	Store undiluted at 2-8°C for one month or (in aliquots) at -20°C for longer. Avoid repeated freezing and thawing.
Stability:	Shelf life: one year from despatch.
Database Link:	<a href="#">Entrez Gene 281060 Bovine P31783</a>



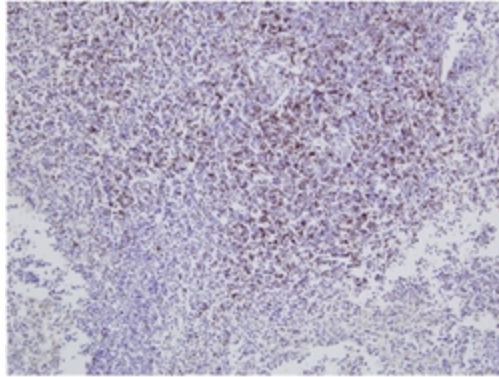
[View online »](#)

**Background:**

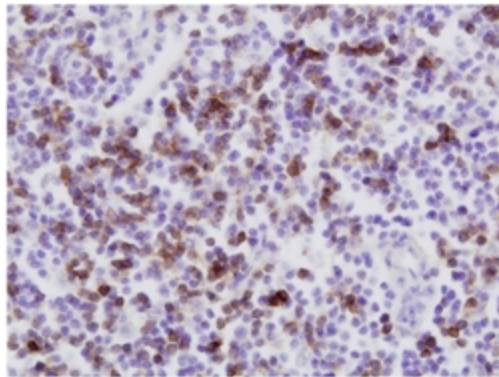
The CD8 antigen is a cell surface glycoprotein found on most cytotoxic T lymphocytes that mediates efficient cell to cell interactions within the immune system. The CD8 antigen, acting as a coreceptor, and the T cell receptor on the T lymphocyte recognize antigen displayed by an antigen presenting cell (APC) in the context of class I MHC molecules. The functional coreceptor is either a homodimer composed of two alpha chains, or a heterodimer composed of one alpha and one beta chain. Both alpha and beta chains share significant homology to immunoglobulin variable light chains.

**Synonyms:**

CD8 alpha chain, CD8A, MAL

**Product images:**

Bovine lymph node stained with Mouse anti Bovine CD8 Antibody Cat.-No AM05901PU-S (Clone CC63). 10x. Image courtesy of Dr. J.B. Silvan, Moredun Research Institute, Roslin, UK



Bovine lymph node stained with Mouse anti Bovine CD8 Antibody Cat.-No AM05901PU-S (Clone CC63). 40x. Image courtesy of Dr. J.B. Silvan, Moredun Research Institute, Roslin, UK