

Product datasheet for **AM05901FC-N**

CD8A Mouse Monoclonal Antibody [Clone ID: CC63]

Product data:

Product Type:	Primary Antibodies
Clone Name:	CC63
Applications:	FC
Recommended Dilution:	Flow Cytometry: Use 10 µl of neat antibody to label 1 ⁰ cells in 100 µl.
Reactivity:	Bovine, Goat, Sheep
Host:	Mouse
Isotype:	IgG2a
Clonality:	Monoclonal
Specificity:	This antibody reacts with the CD8 antigen expressed by a subset of T lymphocytes. The antibody precipitates molecules of 34kD and 38kD under <i>reducing conditions</i> .
Formulation:	Phosphate buffered saline Label: FITC State: Liquid purified Ig fraction Stabilizer: 1% BSA Preservative: 0.09% Sodium Azide Label: Fluorescein Isothiocyanate Isomer 1
Concentration:	lot specific
Purification:	Affinity Chromatography on Protein G
Conjugation:	FITC
Storage:	Store undiluted at 2-8°C for one month or (in aliquots) at -20°C for longer. Avoid repeated freezing and thawing.
Stability:	Shelf life: one year from despatch.
Database Link:	Entrez Gene 281060 Bovine P31783



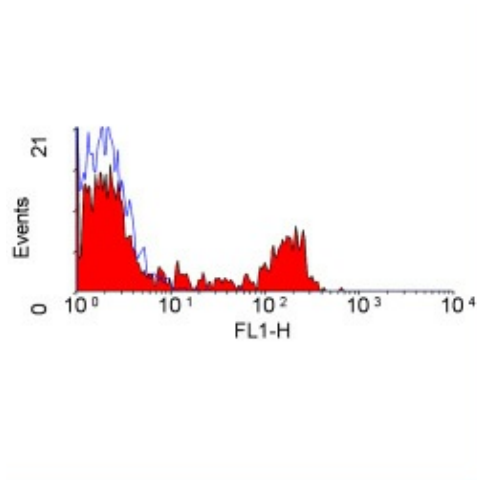
[View online »](#)

Background:

The CD8 antigen is a cell surface glycoprotein found on most cytotoxic T lymphocytes that mediates efficient cell to cell interactions within the immune system. The CD8 antigen, acting as a coreceptor, and the T cell receptor on the T lymphocyte recognize antigen displayed by an antigen presenting cell (APC) in the context of class I MHC molecules. The functional coreceptor is either a homodimer composed of two alpha chains, or a heterodimer composed of one alpha and one beta chain. Both alpha and beta chains share significant homology to immunoglobulin variable light chains.

Synonyms:

CD8 alpha chain, CD8A, MAL

Product images:

AM05901FC-N staining of bovine peripheral blood lymphocytes.