

Product datasheet for **AM05887PU-S**

SLA CLASS II DR Mouse Monoclonal Antibody [Clone ID: 2E9/13]

Product data:

Product Type:	Primary Antibodies
Clone Name:	2E9/13
Applications:	FC, IHC, IP
Recommended Dilution:	Flow Cytometry: Use 10 µl of 1/25-1/200 diluted antibody to label 10 ⁶ cells in 100 µl. Immunoprecipitation: This antibody immunoprecipitates a heterodimer composed of two polypeptides of 28 and 35kD from NP-40 extracts of biotin surface-labelled porcine peripheral blood mononuclear cells. Immunohistochemistry on Frozen Sections.
Reactivity:	Bovine, Porcine
Host:	Mouse
Isotype:	IgG2b
Clonality:	Monoclonal
Immunogen:	Porcine monocytes.
Specificity:	Clone 2E9/13 is specific for SLA DR molecules which are expressed on all B cells, antigen presenting cells and on certain subsets of resting and activated T cells. This clone reacts with lymphocytes from all outbred and miniature pigs so far tested, suggesting that it recognises a monomorphic determinant of porcine SLA DR. Clone 2E9/13 is reported to inhibit the mixed lymphocyte reaction and T cell stimulation induced by African swine fever virus and staphylococcal enterotoxin B, see Bullido, <i>R. et al.</i> for details.
Formulation:	PBS State: Purified State: Liquid purified IgG fraction Preservative: 0.09% Sodium Azide
Concentration:	lot specific
Purification:	Affinity Chromatography on Protein G
Conjugation:	Unconjugated
Storage:	Store undiluted at 2-8°C for one month or (in aliquots) at -20°C for longer. Avoid repeated freezing and thawing.
Stability:	Shelf life: one year from despatch.

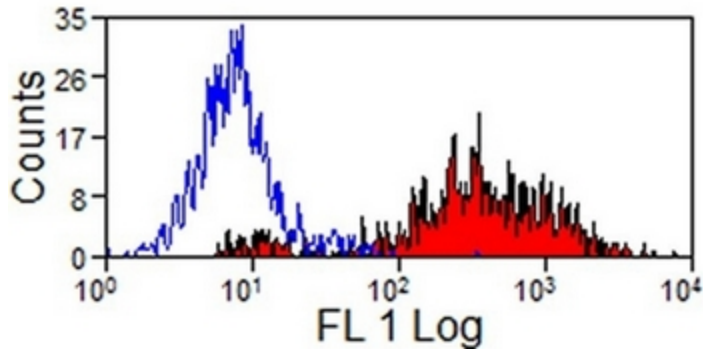


[View online »](#)

Background: The major histocompatibility complex (MHC) is a cluster of genes that are important in the immune response to infections. In pigs, this is referred to as the swine leukocyte antigen (SLA) region. There are 3 major MHC class II proteins encoded by the SLA which are SLA DP, SLA DQ and SLA DR.

Synonyms: MHC Class II DR

Product images:



Pig peripheral blood lymphocytes stained with SLA Class II DR Antibody Cat.-No AM05887PU-S (Clone 2E9/13) followed by Goat anti Mouse IgG - FITC Cat.-No [SP1041F]