

## Product datasheet for **AM05880FC-N**

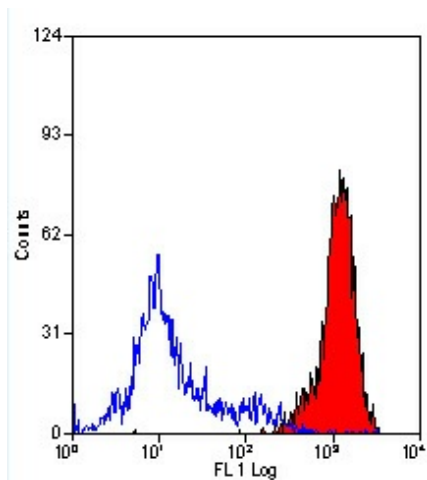
### SLA CLASS I Mouse Monoclonal Antibody [Clone ID: JM1E3]

#### Product data:

Product Type:	Primary Antibodies
Clone Name:	JM1E3
Applications:	FC
Recommended Dilution:	<b>Flow Cytometry:</b> Use 10 µl of neat antibody to label 10e6 cells in 100 µl.
Reactivity:	Human, Porcine
Host:	Mouse
Isotype:	IgG1
Clonality:	Monoclonal
Immunogen:	Porcine peripheral blood mononuclear cells.
Specificity:	This antibody recognizes a monomorphic determinant expressed by porcine MHC class I molecules (SLA-1). SLA-1 is expressed by all nucleated porcine cells, but not by erythrocytes. This antibody has also been shown to cross-react with Human MHC Class I, including HLA-E.
Formulation:	PBS, pH 7.4 containing 0.09% Sodium Azide as preservative and 1% BSA as stabilizer. Label: FITC State: Liquid purified IgG fraction. Label: Fluorescein Isothiocyanate Isomer 1
Concentration:	lot specific
Purification:	Affinity Chromatography on Protein G.
Conjugation:	FITC
Storage:	Store the antibody undiluted at 2-8°C for one month or (in aliquots) at -20°C for longer. This product is photosensitive and should be protected from light. Avoid repeated freezing and thawing.
Stability:	Shelf life: one year from despatch.
Database Link:	<a href="#">A217K3</a>
Background:	The major histocompatibility complex (MHC) is a cluster of genes that are important in the immune response to infections. In Pigs, this is referred to as the swine leukocyte antigen (SLA) region.



[View online »](#)

**Product images:**

Staining of porcine peripheral blood lymphocytes with Mouse anti Porcine SLA Class 1 (AM05880FC-N).