

Product datasheet for **AM05879HR-N**

Rituximab Rat Monoclonal Antibody [Clone ID: MB2 A4]

Product data:

Product Type:	Primary Antibodies
Clone Name:	MB2 A4
Applications:	ELISA
Recommended Dilution:	ELISA: 1/20000-1/20000.
Reactivity:	Human
Host:	Rat
Isotype:	IgG2a
Clonality:	Monoclonal
Immunogen:	F(ab)2 fragment of Rituximab
Specificity:	<p>This antibody specifically recognises the idiotypic determinants expressed by the Rituximab humanised monoclonal antibody.</p> <p>This antibody does not recognise other CD20 antibodies.</p> <p>It has been used to detect Rituximab bound to the surface of the Raji B cell line, however detection of Rituximab bound 'in vivo' to B-CLL cells has not been demonstrated. It is possible that complement deposition on Rituximab opsonised cells inhibits binding of the anti-Rituximab antibody to cell bound Rituximab (3).</p> <p>Clone MB2A4 has been used in ELISA assays to monitor the levels of rituximab in patient serum following therapy (4,5).</p>
Formulation:	<p>PBS</p> <p>Label: HRP</p> <p>State: Purified</p> <p>State: Liquid purified IgG fraction from Tissue Culture Supernatant</p> <p>Stabilizer: HRP stabilizer (containing no Azide, no Mercury, no BSA or other Bovine material, but weak concentrations of Rabbit antibodies).</p> <p>Preservative: 0.01% Thiomersal</p>
Concentration:	lot specific
Purification:	Affinity chromatography on Protein G
Conjugation:	HRP



[View online »](#)

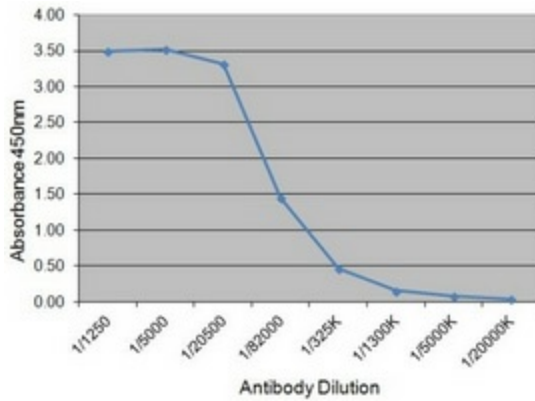
Storage: Store undiluted at 2-8°C.
DO NOT FREEZE!

Stability: Shelf life: one year from despatch.

Background: Rituximab is a therapeutic reagent directed against the human CD20 cell surface antigen.

Synonyms: Rituxan, MabThera

Product images:



Detection of Rituximab in direct ELISA: Rituximab was used as the coating reagent followed by rat anti-Rituximab antibody Cat.-No. AM05879HR-N as the detection antibody.