

Product datasheet for **AM05803PU-M**

Nestin (NES) Mouse Monoclonal Antibody [Clone ID: 10C2]

Product data:

Product Type:	Primary Antibodies
Clone Name:	10C2
Applications:	IF, IHC, WB
Recommended Dilution:	Immunoblotting (Western). Recommended Positive Control: WI38 (ATCC# CCL75) or U251 cell lysate. Immunocytochemistry on fixed cells. Immunohistochemistry on Frozen Sections. Immunohistochemistry on Paraffin Sections. Recommended Dilutions: 1/100-1/200 for Immunocytochemistry and Immunohistochemistry with a Fluorescein or Rhodamine conjugated anti-Mouse secondary antibody, and 1/1000-1/5000 for Western blot applications using chemoluminescent detection.
Reactivity:	Human
Host:	Mouse
Isotype:	IgG1
Clonality:	Monoclonal
Immunogen:	A 150-amino-acid fragment from the cloned Human Nestin, conjugated to <i>Glutathione S-Transferase</i> . Monoclonal antibody 10C2 was derived by fusion of P3x63Ag8.653 myeloma cells with spleen cells from a BALB/c Mouse.
Specificity:	This antibody recognizes Human Nestin protein. It does not react with Mouse and Rat Nestin.
Formulation:	PBS State: Purified State: Liquid purified IgG fraction Preservative: 0.09% Sodium Azide
Concentration:	lot specific
Conjugation:	Unconjugated
Storage:	Store undiluted at 2-8°C for one month or (in aliquots) at -20°C for longer. Avoid repeated freezing and thawing.
Stability:	Shelf life: one year from despatch.



[View online »](#)

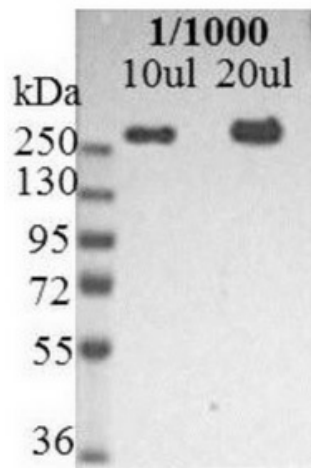
Gene Name: nestin

Database Link: [Entrez Gene 10763 Human P48681](#)

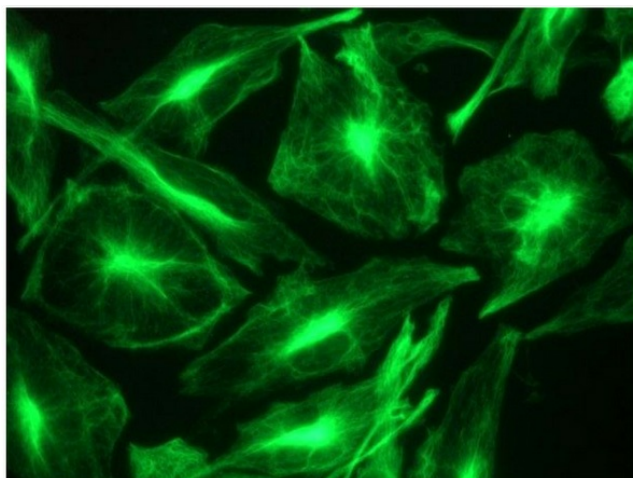
Background: Nestin is a large intermediate filament protein originally identified by Hockfield and McKay (1985). It is predominately expressed in stem cells of the developing nervous system. Terminal differentiation is associated with a loss of nestin expression. Nestin expression has also been noted in other embryonic tissues, also in most Glioblastoma multiformes and many melanomas. This cytoskeletal protein has been widely used as a predominant marker for stem/progenitor cells, glioma cells, and tumor endothelial cells. Also, it is a superior angiogenic marker to evaluate neovascularity of endothelial cells in tumors. These highly specific antibodies to human nestin can aid in characterizing progenitor cells differentiating into distinct lineages, in enhancing the therapeutic potential of human neural stem/progenitor cells in the treatment of CNS diseases or injury, and in identifying neuroepithelial tumor cells.

Synonyms: NES, Nbla00170

Product images:



Immunoblotting of U251-cell lysate showing reactivity with Nestin Antibody.



Immunostaining of intracellular Nestin filaments in U251 cells