

## Product datasheet for **AM05639PU-N**

### CD56 (NCAM1) Mouse Monoclonal Antibody [Clone ID: 123C3]

#### Product data:

Product Type:	Primary Antibodies
Clone Name:	123C3
Applications:	ELISA, FC, IHC
Recommended Dilution:	<b>ELISA.</b> <b>Flow Cytometry:</b> Use 10 µl of 1/10-1/50 diluted antibody to label 1x10 <sup>6</sup> cells in 100 µl. <b>Immunohistochemistry on Frozen Tissues.</b> <b>Immunohistochemistry on Paraffin Sections:</b> 1/100-1/200. The antibody requires antigen retrieval using heat treatment prior to staining of paraffin sections.
Reactivity:	Human
Host:	Mouse
Isotype:	IgG1
Clonality:	Monoclonal
Immunogen:	Small cell lung carcinoma. Spleen cells from immunised Balb/c mice were fused with cells of the Sp2/0 myeloma cell line.
Specificity:	This antibody recognizes Human Neural Cell Adhesion Molecule (NCAM), otherwise known as CD56. Antibodies produced by clone 123C3 recognizes the 140 and 180kDa isoforms of the CD56 protein.
Formulation:	PBS State: Purified State: Liquid purified IgG fraction Preservative: 0.09% Sodium Azide
Concentration:	lot specific
Purification:	Affinity Chromatography on Protein G
Conjugation:	Unconjugated
Storage:	Store undiluted at 2-8°C for one month or (in aliquots) at -20°C for longer. Avoid repeated freezing and thawing.
Stability:	Shelf life: one year from despatch.



[View online »](#)

**Gene Name:** neural cell adhesion molecule 1

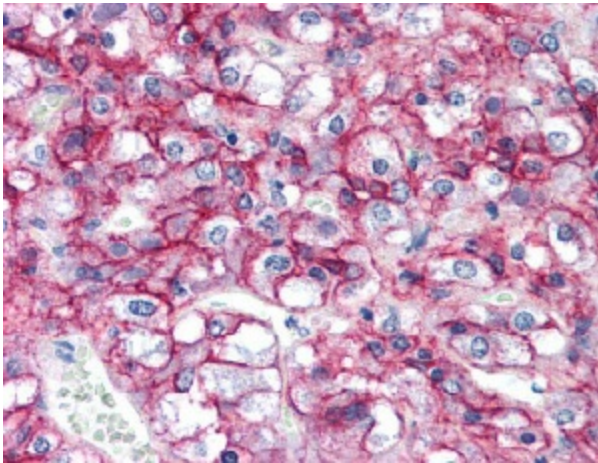
**Database Link:** [Entrez Gene 4684 Human P13591](#)

**Background:** The CD56 molecule is a cell surface glycoprotein which is expressed on neuroendocrine cells, natural killer cells and a subset of T cells in the peripheral blood. Three main isoforms of CD56 exist. Neurons express the largest 180kD form, while haemopoietic cells express the 140kD isoform.

In neuronal tissues, CD56 mediates homophilic and heterophilic adhesion and is implicated in neural development. Studies suggest that CD56 is also expressed on thyroid follicular epithelium and may play a role in autoimmune disease of the thyroid. CD56 is expressed in a range of tumours including tumours of the lung, neural derived malignancies and natural killer cell lymphomas.

**Synonyms:** NCAM-1, N-CAM-1, NCAM

### Product images:



Immunohistochemical staining of human FFPE adrenal tissue section using anti-CD56 antibody at 5 ug/ml followed by biotinylated secondary antibody, alkaline phosphatase-streptavidin and chromogen.