

Product datasheet for **AM05617PU-N**

CD272 (BTLA) Mouse Monoclonal Antibody [Clone ID: MIH26]

Product data:

Product Type:	Primary Antibodies
Clone Name:	MIH26
Applications:	FC, IHC
Recommended Dilution:	Flow Cytometry: Use 10 µl of 1/10-1/200 diluted antibody to label 1x10 ⁶ cells in 100 µl. Immunohistochemistry on Frozen Sections. <i>Histology Positive Control Tissue:</i> Human tonsil.
Reactivity:	Human
Host:	Mouse
Isotype:	IgG2a
Clonality:	Monoclonal
Immunogen:	BTLA - transfected L cells
Specificity:	This antibody detects CD272, also known as B- and T-lymphocyte attenuator (BTLA).
Formulation:	PBS, pH 7.4 State: Purified State: Liquid purified IgG fraction Preservative: 0.09% Sodium Azide
Concentration:	lot specific
Purification:	Affinity Chromatography on Protein G
Conjugation:	Unconjugated
Storage:	Store the antibody undiluted at 2-8°C for one month or (in aliquots) at -20°C for longer. Avoid repeated freezing and thawing.
Stability:	Shelf life: one year from despatch.
Gene Name:	B and T lymphocyte associated
Database Link:	Entrez Gene 151888 Human Q7Z6A9



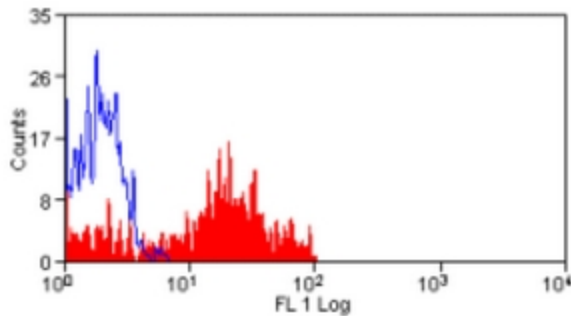
[View online »](#)

Background:

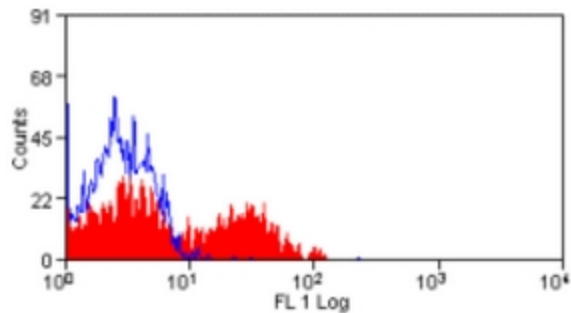
CD272 is a type I transmembrane glycoprotein which is structurally and functionally related to cytotoxic T lymphocyte antigen-4 (CTLA-4), and programmed death-1 (PD-1). CD272 is a T-cell inhibitory receptor that regulates T cell activation through its interaction with herpes virus entry mediator (HVEM), a co-stimulator receptor of the TNFR family. CD272 may negatively regulate T-cell dependent autoimmune reaction, and polymorphisms in its gene have been associated with Rheumatoid Arthritis.

Synonyms:

BTLA1; CD272; FLJ16065; MGC129743

Product images:

Staining of Human peripheral blood lymphocytes with CD272 / BTLA antibody



Staining of Human peripheral blood lymphocytes with CD272 / BTLA antibody