

## Product datasheet for **AM05589PU-N**

### Mannose Receptor (MRC1) Mouse Monoclonal Antibody [Clone ID: 7-450]

#### Product data:

Product Type:	Primary Antibodies
Clone Name:	7-450
Applications:	IHC
Recommended Dilution:	<b>Immunohistochemistry on Frozen Sections:</b> 1/50-1/500. <b>Positive Control:</b> Human Tonsil.
Reactivity:	Human
Host:	Mouse
Isotype:	IgG2a
Clonality:	Monoclonal
Immunogen:	Monocyte-derived dendritic cells. Spleen cells from immunised Balb/c mice were fused with cells of the X63-Ag8.653 myeloma cell line.
Specificity:	This antibody is specific for CD206, otherwise known as Macrophage Mannose Receptor (MMR).
Formulation:	PBS State: Purified State: Liquid purified IgG fraction from Tissue Culture Supernatant Preservative: 0.09% Sodium Azide
Concentration:	lot specific
Purification:	Affinity Chromatography on Protein G
Conjugation:	Unconjugated
Storage:	Store undiluted at 2-8°C for one month or (in aliquots) at -20°C for longer. Avoid repeated freezing and thawing.
Stability:	Shelf life: one year from despatch.
Gene Name:	mannose receptor, C type 1
Database Link:	<a href="#">Entrez Gene 4360 Human P22897</a>



[View online »](#)

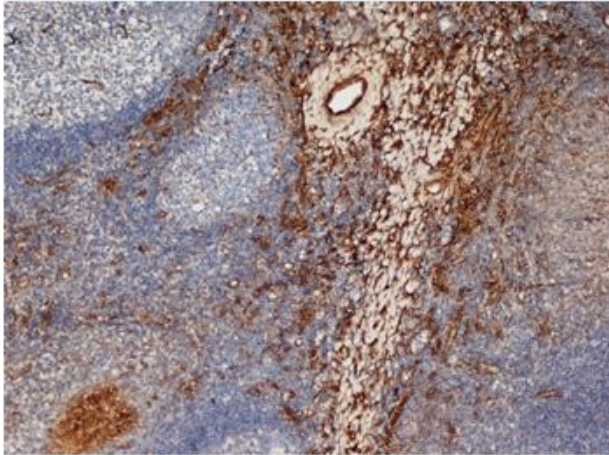
**Background:**

CD206 is a transmembrane protein and member of the multilectin family of pattern recognition receptors (PRRs), which mediates phagocytosis and endocytosis, and is modulated by a range of factors including cytokines, immunoglobulin receptors and pathogens.

CD206 has two extracellular lectin binding sites: the cysteine-rich domain binds to sulphated sugars of glycoproteins such as thyroid stimulating hormone, whilst the recognition of mannose and fucose occurs through carbohydrate recognition domains (CRDs). The widespread distribution and recognition of a wide range of antigens by macrophages, plays a key role in both innate and adaptive immunity, with CD206 able to bind to both gram-negative and gram-positive bacteria, mycobacterium, yeasts, fungi and parasites. The expression of CD206 is not restricted to macrophages, but is also present on immature dendritic cells (DCs), endothelial cells, kidney mesangial cells, retinal pigment epithelium and tracheal smooth muscle cells.

**Synonyms:**

Macrophage mannose receptor, CLEC13D, CLEC13DL, MRC1L1

**Product images:**

Frozen Human Tonsil stained with Mouse anti Human CD206 antibody (Clone 7-450).