

## Product datasheet for **AM05567PU-N**

### CD62P (SELP) Mouse Monoclonal Antibody [Clone ID: Psel.KO.2.5]

#### Product data:

Product Type:	Primary Antibodies
Clone Name:	Psel.KO.2.5
Applications:	FC, IHC, IP
Recommended Dilution:	<b>Immunoprecipitation.</b> <b>Flow Cytometry:</b> Use 10 µl of 1/1-1/50 diluted antibody to label 10e6 cells in 100 µl. <b>Immunohistochemistry on Paraffin Sections:</b> 10 µg/ml (Heat induced antigen retrieval in pH 6.0 citrate buffer is recommended).
Reactivity:	Human, Porcine, Sheep
Host:	Mouse
Isotype:	IgG1
Clonality:	Monoclonal
Immunogen:	CD62P transfected 300.19 cells.
Specificity:	This antibody recognises the CD62P cell surface antigen, a 140kD glycoprotein also known as P-selectin.
Formulation:	PBS, pH 7.4 State: Purified State: Liquid purified IgG fraction from Ttissue Culture Supernatant Preservative: 0.09% Sodium Azide
Concentration:	lot specific
Purification:	Affinity Chromatography on Protein G
Conjugation:	Unconjugated
Storage:	Store undiluted at 2-8°C for one month or (in aliquots) at -20°C for longer. Avoid repeated freezing and thawing.
Stability:	Shelf life: one year from despatch.
Gene Name:	selectin P
Database Link:	<a href="#">Entrez Gene 6403 Human P16109</a>



[View online »](#)

**Background:**

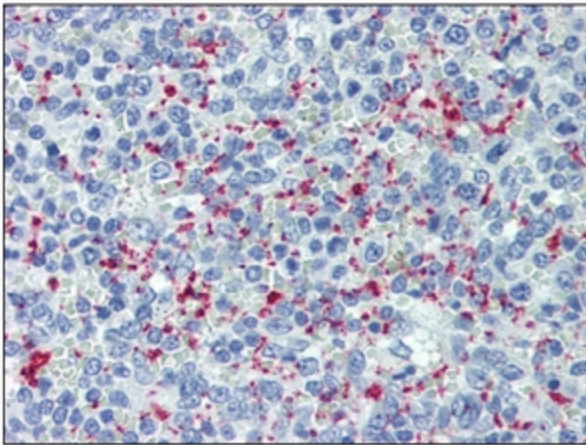
SELP encodes a 140 kDa protein that is stored in the alpha-granules of platelets and Weibel-Palade bodies of endothelial cells. This protein redistributes to the plasma membrane during platelet activation and degranulation and mediates the interaction of activated endothelial cells or platelets with leukocytes. The membrane protein is a calcium-dependent receptor that binds to sialylated forms of

Lewis blood group carbohydrate antigens on neutrophils and monocytes. Alternative splice variants may occur but are not well documented.

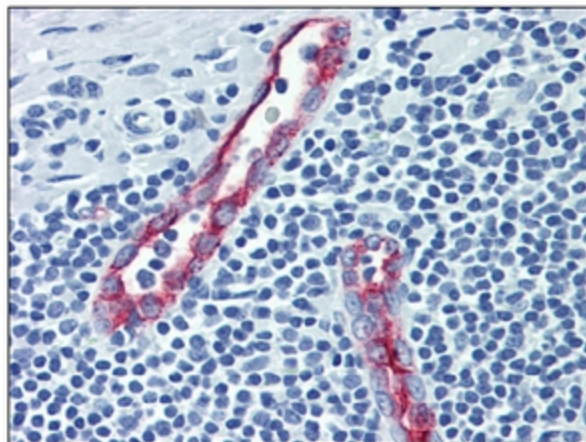
CD62P is expressed by activated platelets and endothelial cells, and plays an important role in adhesive processes between leucocytes and endothelial cells.

**Synonyms:**

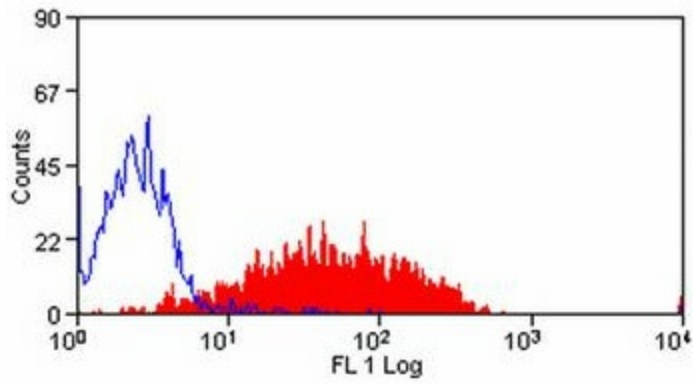
SELP, GMRP, GRMP, PADGEM, GMP-140, LECAM3

**Product images:**

Immunohistochemistry: SELP antibody staining of Formalin-Fixed, Paraffin-Embedded Human Spleen followed by biotinylated secondary antibody, alkaline phosphatase-streptavidin and chromogen.



Immunohistochemistry: SELP antibody staining of Formalin-Fixed, Paraffin-Embedded Human Tonsil followed by biotinylated secondary antibody, alkaline phosphatase-streptavidin and chromogen.



Flow Cytometry: Staining of thrombin activated peripheral blood platelets with Mouse anti Human CD62P antibody