

## Product datasheet for **AM05550PE-N**

### CD41-CD61 Complex Mouse Monoclonal Antibody [Clone ID: 11C3]

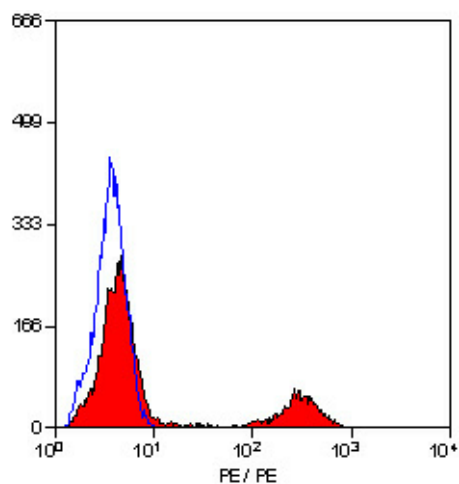
#### Product data:

Product Type:	Primary Antibodies
Clone Name:	11C3
Applications:	FC
Recommended Dilution:	Flow Cytometry.
Reactivity:	Chicken
Host:	Mouse
Isotype:	IgG1
Clonality:	Monoclonal
Immunogen:	Peripheral blood leukocytes from white leghorn chicken
Specificity:	This antibody recognises the integrin CD41/61. Clone 11C3 is reported to induce thrombocyte activation.
Formulation:	Phosphate buffered saline pH7.4 containing 0.09% Sodium Azide, 1% Bovine Serum Albumin, 5% sucrose Label: PE State: Lyophilised purified IgG
Reconstitution Method:	Reconstitute with 1.0 ml distilled water
Concentration:	lot specific
Purification:	Affinity chromatography on Protein G
Conjugation:	PE
Storage:	Prior to and following reconstitution store the antibody at 2-8°C. DO NOT FREEZE! This product is photosensitive and should be protected from light.
Stability:	Shelf life: one year from despatch.
Background:	CD41/61 is a heterodimeric cell surface protein that is expressed on chicken thrombocytes and cells of the thrombocyte lineage. Avian thrombocytes are nucleated equivalents of mammalian platelets which play a role in coagulation and phagocytosis.
Synonyms:	GPIIb-IIIa, ITGA2B, GP2B, ITGAB, Platelet membrane glycoprotein IIb, GPalpha IIb, GPIIb, GP3A, CD41, CD61, Integrin alpha-IIb, Integrin beta-3, ITGB3



[View online >](#)

## Product images:



Staining of chicken peripheral blood cells with mouse anti chicken CD41/61:RPE