

Product datasheet for **AM05549RP-N**

VCAM1 Mouse Monoclonal Antibody [Clone ID: STA]

Product data:

Product Type:	Primary Antibodies
Clone Name:	STA
Applications:	FC
Recommended Dilution:	Flow Cytometry: Use 10 µl of neat-1/5 diluted antibody to label 10e6 cells in 100 µl.
Reactivity:	Human
Host:	Mouse
Isotype:	IgG1
Clonality:	Monoclonal
Immunogen:	Spleen Cells of the DS6 T-cell line Spleen cells from immunised Balb/c mice were fused with cells of the NS-1 myeloma cell line.
Specificity:	This antibody recognises CD106, a 110kD cell surface protein predominantly expressed on activated vascular endothelium.
Formulation:	PBS, pH 7.4 containing 0.09% Sodium Azide as preservative and 1% BSA as stabilizer Label: PE State: Lyophilised purified IgG fraction Label: R. Phycoerythrin (RPE)
Reconstitution Method:	Restore with 1.0 ml distilled water
Concentration:	lot specific
Purification:	Affinity Chromatography on Protein G
Conjugation:	PE
Storage:	Prior to and following reconstitution store the antibody at 2-8°C. DO NOT FREEZE! This product is photosensitive and should be protected from light.
Stability:	Shelf life: one year from despatch.
Gene Name:	vascular cell adhesion molecule 1
Database Link:	Entrez Gene 7412 Human P19320



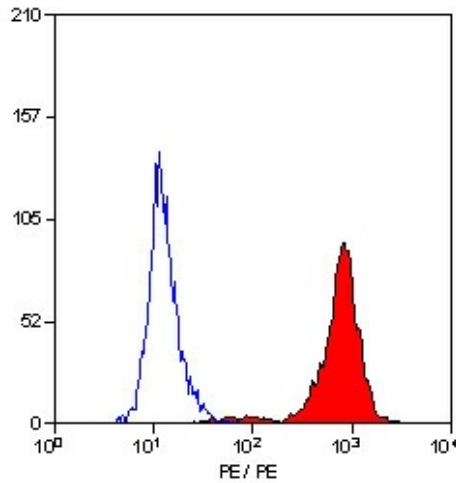
[View online »](#)

Background:

CD106, also known as vascular cell adhesion molecule 1 (VCAM-1), is also expressed by several non-endothelial cell types including some macrophages, follicular dendritic cells and bone marrow, stromal cells. CD106 binds the integrins alpha4 beta1 and alpha4 beta7 and mediates leucocyte-endothelial cell adhesion.

Synonyms:

V-CAM 1, INCAM-100, L1CAM, VCAM-1

Product images:

Staining of KM-H2 cells with mouse anti Human CD106 PE conjugated