

## Product datasheet for **AM05530SU-T**

### CD8A Mouse Monoclonal Antibody [Clone ID: 4B11]

#### Product data:

Product Type:	Primary Antibodies
Clone Name:	4B11
Applications:	IHC
Recommended Dilution:	<b>Immunohistochemistry on Frozen Sections:</b> 1/20-1/40. <b>Immunohistochemistry on paraffin sections:</b> 1/20-1/40. This product requires antigen retrieval using heat treatment prior to staining of paraffin sections. 1mM EDTA pH 8.0 is recommended for this purpose. Positive Control Tissue: Human Tonsil.
Reactivity:	Human
Host:	Mouse
Isotype:	IgG2b
Clonality:	Monoclonal
Immunogen:	Synthetic peptide derived from CD8 alpha chain sequence.
Specificity:	This antibody recognizes the Human CD8 cell surface antigen, a 32kD glycoprotein expressed by the cytotoxic/suppressor subset of T-cells and weakly by NK cells. Clone 4B11 has been reported as being suitable for use in Western blotting. AM05530SU-N is recommended for this purpose.
Formulation:	State: Lyophilized Tissue Culture Supernatant containing 0.09% Sodium Azide as preservative.
Reconstitution Method:	Restore with 1 ml distilled water.
Conjugation:	Unconjugated
Storage:	Prior to reconstitution store at 2-8°C. Following reconstitution store the antibody undiluted at 2-8°C for one month or (in aliquots) at -20°C for longer. Avoid repeated freezing and thawing.
Stability:	Shelf life: one year from despatch.
Gene Name:	CD8a molecule
Database Link:	<a href="#">Entrez Gene 925 Human P01732</a>



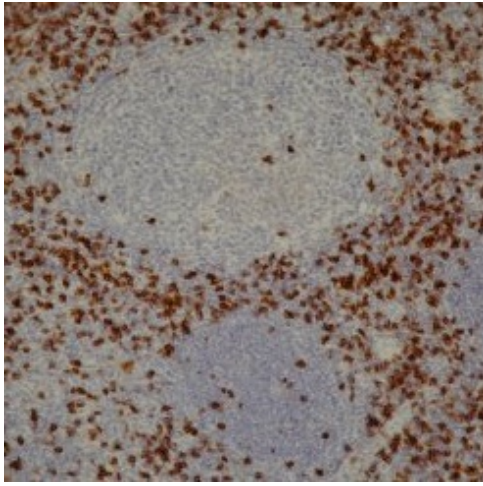
[View online »](#)

**Background:**

The CD8 antigen is a cell surface glycoprotein found on most cytotoxic T lymphocytes that mediates efficient cell to cell interactions within the immune system. The CD8 antigen, acting as a coreceptor, and the T cell receptor on the T lymphocyte recognize antigen displayed by an antigen presenting cell (APC) in the context of class I MHC molecules. The functional coreceptor is either a homodimer composed of two alpha chains, or a heterodimer composed of one alpha and one beta chain. Both alpha and beta chains share significant homology to immunoglobulin variable light chains.

**Synonyms:**

CD8 alpha chain, CD8A, MAL

**Product images:**

CD8 - AM05530SU-T - Tonsil. Formalin fixed, paraffin processed tissue. Mag. 40X.