

Product datasheet for **AM05528PU-L**

CD3E Mouse Monoclonal Antibody [Clone ID: CA17.2A12]

Product data:

Product Type:	Primary Antibodies
Clone Name:	CA17.2A12
Applications:	FC, IHC, IP
Recommended Dilution:	Immunohistochemistry on frozen sections. Immunoprecipitation. Flow Cytometry: 1/25 - 1/50.
Reactivity:	Canine
Host:	Mouse
Isotype:	IgG1
Clonality:	Monoclonal
Specificity:	This antibody recognises the CD3 cell surface antigen, expressed by mature T lymphocytes
Formulation:	Phosphate buffered saline pH7.4 containing 0.09% Sodium Azide State: Purified State: Liquid purified IgG
Concentration:	lot specific
Purification:	Affinity chromatography on Protein G
Conjugation:	Unconjugated
Storage:	Store the antibody undiluted at 2-8°C for one month or (in aliquots) at -20°C for longer. Avoid repeated freezing and thawing.
Stability:	Shelf life: one year from despatch.
Database Link:	P27597



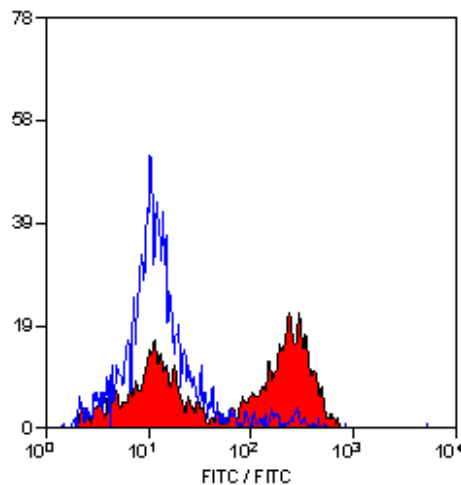
[View online »](#)

Background:

T cell activation through the antigen receptor (TCR) involves the cytoplasmic tails of the CD3 subunits: CD3 gamma, CD3 delta, CD3 epsilon and CD3 zeta. These CD3 subunits are structurally related members of the immunoglobulins super family encoded by closely linked genes on human chromosome 11. The CD3 components have long cytoplasmic tails that associate with cytoplasmic signal transduction molecules. This association is mediated at least in part by a double tyrosine based motif present in a single copy in the CD3 subunits. CD3 may play a role in TCR induced growth arrest, cell survival and proliferation. The CD3 antigen is present on 68-82% of normal peripheral blood lymphocytes, 65-85% of thymocytes and Purkinje cells in the cerebellum. It is never expressed on B or NK cells. Decreased percentages of T lymphocytes may be observed in some autoimmune diseases.

Synonyms:

T3/Leu-4

Product images:

Staining of canine peripheral blood lymphocytes with mouse anti canine CD3