

## Product datasheet for **AM05516PU-M**

### CD21 Mouse Monoclonal Antibody [Clone ID: CC21]

#### Product data:

Product Type:	Primary Antibodies
Clone Name:	CC21
Applications:	FC, IF, IHC, IP
Recommended Dilution:	<b>Immunoprecipitation.</b> <b>Immunofluorescence.</b> <b>Immunohistochemistry on Frozen Sections.</b> <b>Flow Cytometry:</b> Use 10 µl of 1/25-1/200 diluted antibody to label 10 <sup>6</sup> cells in 100 µl.
Reactivity:	Bovine, Goat, Sheep
Host:	Mouse
Isotype:	IgG1
Clonality:	Monoclonal
Specificity:	This antibody recognises the Bovine CD21 cell surface antigen.
Formulation:	PBS State: Purified State: Liquid purified IgG fraction Preservative: 0.09% Sodium Azide
Concentration:	lot specific
Purification:	Affinity Chromatography on Protein G
Conjugation:	Unconjugated
Storage:	Store undiluted at 2-8°C for one month or (in aliquots) at -20°C for longer. Avoid repeated freezing and thawing.
Stability:	Shelf life: one year from despatch.
Database Link:	<a href="#">Q8HY44</a>



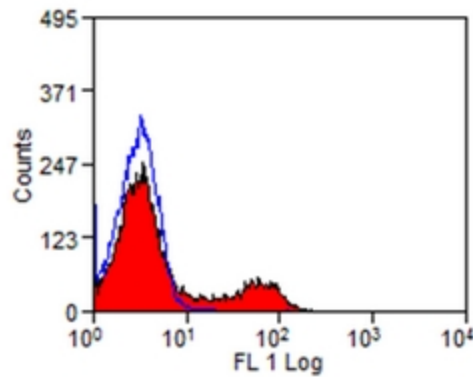
[View online »](#)

**Background:**

CD21 also known as complement receptor 2 (CR2), C3d receptor or EBV receptor is a 140 kDa protein. CD21 is a glycosylated type I transmembrane protein consisting of an extracellular face of a series of 15 or 16 CCP domains. CD21 is the receptor for complement components C3d and iC3b as well as the Epstein-Barr virus (EBV) glycoprotein gp350/220. The soluble CD21 (sCD21) was shown to efficiently trigger CD23 signalling pathways in human monocytes. By inducing release of proinflammatory cytokines and upregulating expression of molecules involved in antigen presentation, sCD21 modulates critical monocyte functions that may be relevant to allergic and inflammatory disorders.

**Synonyms:**

Complement receptor type 2, CR2, C3DR, C3d receptor, EBV Receptor, Dendritic Cell Marker

**Product images:**

Staining of Bovine peripheral blood lymphocytes with CD21 Antibody Cat.-No AM05516PU-M (clone CC21)