

## Product datasheet for **AM05393BT-N**

### III Mouse Monoclonal Antibody [Clone ID: E1]

#### Product data:

Product Type:	Primary Antibodies
Clone Name:	E1
Applications:	ELISA, WB
Recommended Dilution:	<b>ELISA.</b> <b>Western blot:</b> 1-5 µg/ml. <b>Flow Cytometry:</b> 1 µg/10 <sup>6</sup> cells. <b>Immunohistochemistry.</b>
Reactivity:	M13 Bacteriophage
Host:	Mouse
Isotype:	IgG2a
Clonality:	Monoclonal
Immunogen:	Hybridoma produced by the fusion of splenocytes from mice immunized with isolated M13 phage coat proteins and mouse myeloma cells.
Specificity:	This antibody recognizes M13 bacteriophage (gp3).
Formulation:	Phosphate buffered saline with 0.08% Sodium Azide as preservative Label: Biotin State: Liquid purified IgG fraction
Concentration:	lot specific
Purification:	Protein A/G Chromatography
Conjugation:	Biotin
Storage:	Upon receipt, store undiluted (in aliquots) at -20°C. Avoid repeated freezing and thawing.
Stability:	Shelf life: one year from despatch.
Database Link:	<a href="#">P69168</a>



[View online »](#)

**Background:**

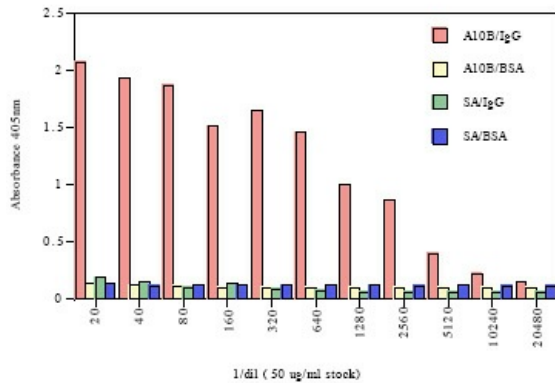
The display of repertoires of antibody fragments on the surface of filamentous phage offers a new way to produce immunoreagents with defined specificities. Phage derived antibody fragments offer a number of advantages over mouse monoclonal antibodies, such as better clearance from the blood, the possibility to select from human combinatorial libraries and the relative ease by which such fragments can be manipulated. The phage display technique thus facilitates the selection of antibody fragments of therapeutic value or research interest. Antibodies to M13 filamentous phage coat proteins are instrumental in the selection and detection of phages expressing specific antibody fragments or peptide sequences at their surface.

**Synonyms:**

Attachment protein G3P, Gene 3 protein, Minor coat protein A

**Product images:**

ELISA Activity of Biotinylated anti -M13 on Phage Displayed A10B anti-Rabbit IgG ScFv



Data represents absorbancy readings for A10B phage on rabbit IgG (A10B/IgG), A10B phage on BSA (A10B/BSA), streptavidin on rabbit IgG (SA/IgG) and streptavidin on BSA (SA/BSA) for each dilution of biotinylated anti-M13 monoclonal antibody.