

## Product datasheet for **AM05385PU-N**

### TCP1 beta (CCT2) Mouse Monoclonal Antibody [Clone ID: F39 P7 F11]

#### Product data:

Product Type:	Primary Antibodies
Clone Name:	F39 P7 F11
Applications:	IHC, WB
Recommended Dilution:	<b>Western Blot:</b> 1-2 µg/ml. <b>Immunohistochemistry on Formlin-Fixed, Paraffin-Embedded Tissue Sections:</b> 1-5 µg/ml. <b>Positive Control:</b> Colorectal cancer tissue, Calu6 and HT29 cell lysates.
Reactivity:	Frog, Human, Mouse, Rat
Host:	Mouse
Isotype:	IgG2a
Clonality:	Monoclonal
Immunogen:	Hybridoma produced by the fusion of splenocytes from BALB/c mice immunized with a synthetic peptide derived from the C-terminal of the TCP1 beta protein and Mouse myeloma Ag8563 cells.
Specificity:	This antibody recognizes T-Complex Protein 1, beta subunit.
Formulation:	PBS State: Purified State: Liquid purified Ig fraction Preservative: 0.08% Sodium Azide
Concentration:	lot specific
Purification:	Protein A/G Chromatography
Conjugation:	Unconjugated
Storage:	Upon receipt, store undiluted (in aliquots) at -20°C. Avoid repeated freezing and thawing.
Stability:	Shelf life: One year from despatch.
Predicted Protein Size:	57 kDa
Gene Name:	chaperonin containing TCP1 subunit 2
Database Link:	<a href="#">Entrez Gene 10576 Human P78371</a>



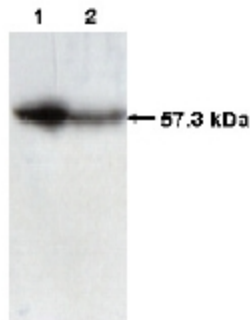
[View online »](#)

**Background:**

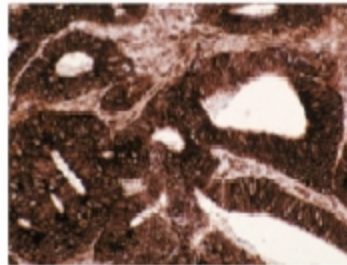
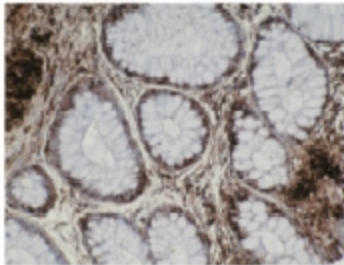
The protein TCP-1 (t-complex polypeptide 1) is a subunit of the hetero-oligomeric complex CCT (chaperonin containing TCP-1) present in the eukaryotic cytosol. The CCT of eukaryotic cytosol is composed of eight different subunit species that are proposed to have independent functions in folding its in vivo substrates, the Actins and Tubulins. TCP-1 was first identified in the mouse as relevant for tail-less and embryonic lethal phenotypes. Sequences homologous to TCP-1 have been isolated in several other species, and the yeast TCP-1 has been shown to encode a molecular chaperone for Actin and Tubulin. TCP-1 found in mammalian cells and yeast plays an important role in the folding of cytosolic proteins.

**Synonyms:**

99D8.1, CCT-beta, CCTB, TCP-1 beta

**Product images:**

Western blot analysis using TCP1 beta Antibody. (Clone F39 P7 F11) on Calu6 (Lane 1) and HT-29 (Lane 2) cell lysates.



Immunohistochemical staining of normal (left) and cancerous (right) colon tissue using TCP1 beta Antibody. (Clone F39 P7 F11).