

Product datasheet for **AM05377PU-N**

MMP2 Mouse Monoclonal Antibody [Clone ID: 4D3]

Product data:

Product Type:	Primary Antibodies
Clone Name:	4D3
Applications:	ELISA, IHC, WB
Recommended Dilution:	ELISA. Western Blot: 1 - 2 µg/ml. Immunohistochemistry on paraffin sections: 1 - 5 µg/ml.
Reactivity:	Human
Host:	Mouse
Isotype:	IgG1
Clonality:	Monoclonal
Immunogen:	Hybridoma produced by the fusion of splenocytes from BALB/c mice immunized with a synthetic peptide derived from the Cterminus of the human MMP2 protein and mouse myeloma Ag8563 cells.
Specificity:	This antibody reacts to Matrix Metalloproteinase 2.
Formulation:	Phosphate buffered saline with 0.08% sodium azide State: Purified State: Liquid purified Ig
Concentration:	lot specific
Conjugation:	Unconjugated
Storage:	The antibody can be shipped at ambient temperature. Store (in aliquots) at -20°C only. Avoid repeated freezing and thawing.
Stability:	Shelf life: one year from despatch.
Gene Name:	matrix metalloproteinase 2
Database Link:	Entrez Gene 4313 Human P08253



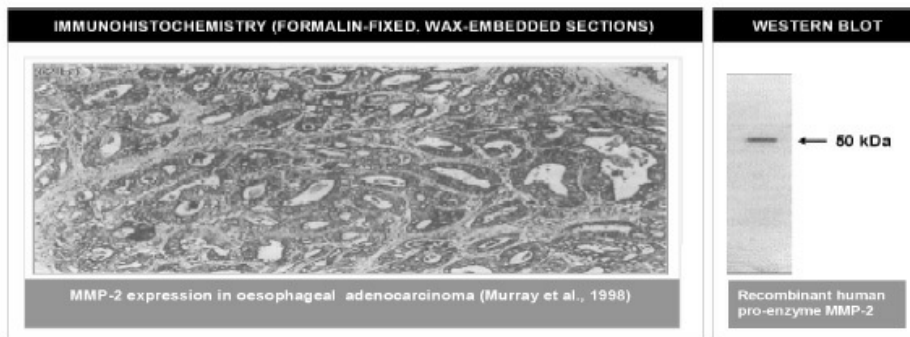
[View online »](#)

Background:

The matrix metalloproteinases (MMP) are a family of peptidase enzymes responsible for the degradation of extracellular matrix components, including collagen, gelatin, fibronectin, laminin and proteoglycan. Transcription of MMP genes is differentially activated by phorbol ester, lipopolysaccharide (LPS) or staphylococcal enterotoxin B (SEB). MMP catalysis requires both calcium and zinc. MMP-2 (also designated type IV collagenase) cleaves Collagen Types IV, V, VII and X and gelatin type I. Activation of MMP-2 secretion requires the Ras signaling pathway.

Synonyms:

MMP2, CLG4A, 72 kDa gelatinase, Matrix metalloproteinase-2, Gelatinase A, TBE-1

Product images:

Left: Immunohistochemical staining of human oesophageal adenocarcinoma tissue using MMP-2 antibody. Right: Western blot using MMP-2 antibody on recombinant MMP-2 proenzyme (400 ng/lane).