

## Product datasheet for **AM05375PU-N**

### **CYPIVF11 (CYP4F11) Mouse Monoclonal Antibody [Clone ID: F21 P6 F5]**

#### **Product data:**

<b>Product Type:</b>	Primary Antibodies
<b>Clone Name:</b>	F21 P6 F5
<b>Applications:</b>	ELISA, IHC, WB
<b>Recommended Dilution:</b>	ELISA. Western Blot: 1 - 2 µg/ml. Immunohistochemistry on paraffin sections: 1 - 5 µg/ml.
<b>Reactivity:</b>	Human
<b>Host:</b>	Mouse
<b>Isotype:</b>	IgG1
<b>Clonality:</b>	Monoclonal
<b>Immunogen:</b>	Hybridoma produced by the fusion of splenocytes from BALB/c mice immunized with a synthetic peptide derived from the Cterminus of the human CYP450 4F11 protein and mouse myeloma Ag8563 cells.
<b>Specificity:</b>	This Antibody reacts to Cytochrome P450 4F11.
<b>Formulation:</b>	Phosphate buffered saline with 0.08% sodium azide State: Purified State: Liquid purified Ig
<b>Concentration:</b>	lot specific
<b>Conjugation:</b>	Unconjugated
<b>Storage:</b>	The antibody can be shipped at ambient temperature. Store (in aliquots) at -20°C only. Avoid repeated freezing and thawing.
<b>Stability:</b>	Shelf life: one year from despatch.
<b>Gene Name:</b>	cytochrome P450 family 4 subfamily F member 11
<b>Database Link:</b>	<a href="#">Entrez Gene 57834 Human</a> <a href="#">Q9HBI6</a>



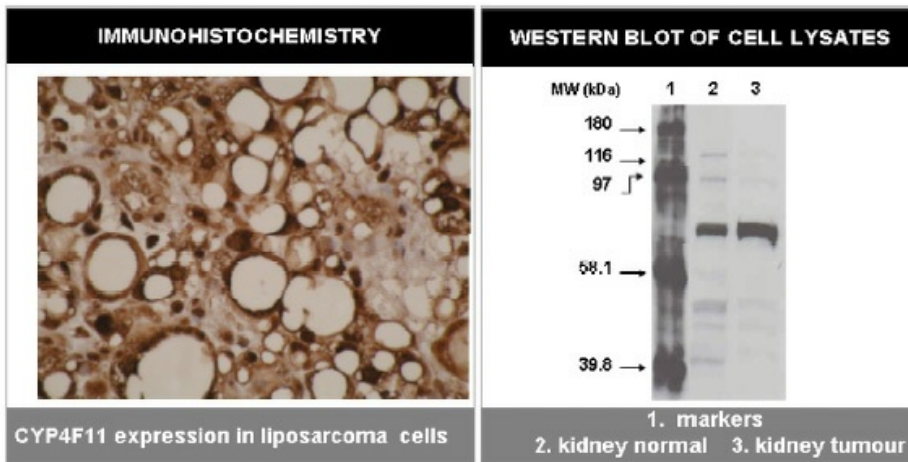
[View online »](#)

**Background:**

The cytochrome P450 proteins (CYPs) are monooxygenases that catalyze many reactions involved in drug metabolism and synthesis of cholesterol, steroids and other lipids. P450 enzymes are classified into subfamilies based on their sequence similarities. CYP4F11 is an isoform of the cytochrome P450 4F protein and is expressed mainly in human liver, followed by kidney, heart, and skeletal muscle. CYP4F11 contains 524 amino acid residues that share 80.0, 82.3 and 79.2% identity to CYP4F2, CYP4F3, and CYP4F8 amino acid sequences, respectively. CYP4F11 has catalytic properties towards endogenous eicosanoids as well as some clinically relevant drugs, and is able to metabolize large molecules such as erythromycin.

**Synonyms:**

Cytochrome P450 4F11, CYPIVF11

**Product images:**


Left: Immunohistochemical staining of human liposarcoma cells using CYP4F11 antibody. Right: Western blot using CYP4F11 antibody one normal (2) and cancerous (3) kidney cell lysates.