

Product datasheet for **AM05372PU-N**

Cytochrome P450 3A5 (CYP3A5) Mouse Monoclonal Antibody [Clone ID: F18 P3 B6]

Product data:

Product Type:	Primary Antibodies
Clone Name:	F18 P3 B6
Applications:	ELISA, IHC, WB
Recommended Dilution:	ELISA. Western Blot: 1 - 2 µg/ml. Immunohistochemistry on paraffin sections: 1 - 5 µg/ml. When used in conjunction with CYP3A7 (Cat. No. AM05373PU-N), can differentiate between the CYP3A family members, 3A5 and 3A7. Positive Control: Squamous oesophagus cancer.
Reactivity:	Human
Host:	Mouse
Isotype:	IgG1
Clonality:	Monoclonal
Immunogen:	Hybridoma produced by the fusion of splenocytes from BALB/c mice immunized with a synthetic peptide derived from the Cterminus of the human CYP3A5 protein and mouse myeloma Ag8563 cells.
Specificity:	This antibody reacts to Cytochrome P450 3A5.
Formulation:	Phosphate buffered saline with 0.08% sodium azide State: Purified State: Liquid purified Ig
Concentration:	lot specific
Conjugation:	Unconjugated
Storage:	The antibody can be shipped at ambient temperature. Store (in aliquots) at -20°C only. Avoid repeated freezing and thawing.
Stability:	Shelf life: one year from despatch.
Gene Name:	cytochrome P450 family 3 subfamily A member 5
Database Link:	Entrez Gene 1577 Human P20815



[View online »](#)

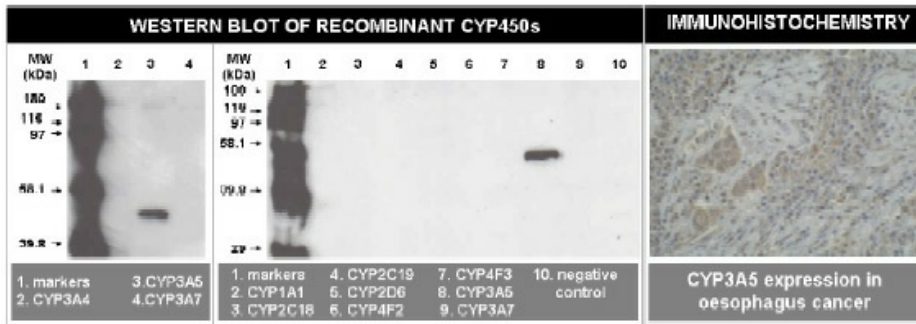
Background:

CYP3A genes encode monooxygenases, enzymes which catalyze drug metabolism and the synthesis of cholesterol, steroids and other lipids. CYP3A (cytochrome P450, family 3, subfamily A), the most abundant p450 enzyme in human liver, is responsible for the metabolism of more than 50% of all clinical drugs. CYP3A members localize in organs that associate with drug disposition, including the liver, gastrointestinal tract and kidney. The CYP3A cluster consists of four genes: CYP3A43, CYP3A4, CYP3A7 and CYP3A5, and two pseudogenes: CYP3A5P1 and CYP3A5P2. The CYP3A cluster maps to gene locus 7q21.3-q22.1.

Synonyms:

Cytochrome P450 3A5, Cytochrome P450-PCN3, Cytochrome P450 HLp2

Product images:



Left: Western blot using 3A5 antibody on recombinant CYP450 proteins. Right: Immunohistochemistry stain using 3A5 antibody on oesophagus cancer tissue.