

Product datasheet for **AM05370PU-N**

Cytochrome P450 2A6 (CYP2A6) Mouse Monoclonal Antibody [Clone ID: F16 P2 D8]

Product data:

Product Type:	Primary Antibodies
Clone Name:	F16 P2 D8
Applications:	ELISA, IHC, WB
Recommended Dilution:	ELISA. Immunohistochemistry on paraffin sections. Western Blot: 1 - 2 µg/ml.
Reactivity:	Human
Host:	Mouse
Isotype:	IgG1
Clonality:	Monoclonal
Immunogen:	Hybridoma produced by the fusion of splenocytes from BALB/c mice immunized with Synthetic peptide conjugated to ovalbumin derived from the C-terminus of CYP2A6 and mouse myeloma Ag8563 cells. Antigen identical in CYP2A6, 2A7 and 2A13.
Specificity:	This antibody reacts to Cytochrome p450 2A6.
Formulation:	Phosphate buffered saline with 0.08% sodium azide State: Purified State: Liquid purified Ig
Concentration:	lot specific
Conjugation:	Unconjugated
Storage:	The antibody can be shipped at ambient temperature. Store (in aliquots) at -20°C only. Avoid repeated freezing and thawing.
Stability:	Shelf life: one year from despatch.
Gene Name:	cytochrome P450 family 2 subfamily A member 6
Database Link:	Entrez Gene 1548 Human P11509



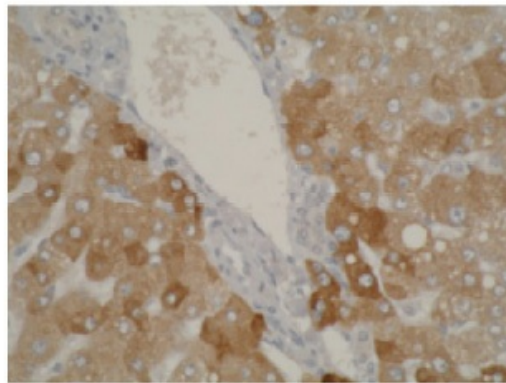
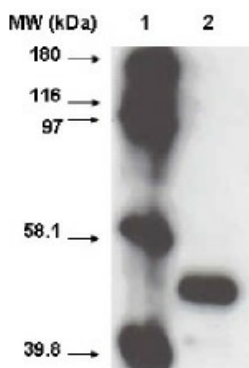
[View online »](#)

Background:

The cytochrome P450 proteins (CYPs) are monooxygenases that catalyze many reactions involved in drug metabolism and synthesis of cholesterol, steroids and other lipids. P450 enzymes are classified into subfamilies based on their sequence similarities. CYP2A6 is a liver enzyme that metabolizes a number of drugs and a variety of procarcinogens, though it is primarily responsible for the metabolism of nicotine, the major addictive agent in tobacco. CYP2A6 inactivates nicotine to cotinine, and then cotinine to 3-hydroxycotinine. Differences in CYP2A6 genotypes are related to nicotine dependence, and may influence smoking habits and withdrawal symptoms in individuals that are quitting smoking. This suggests that an individualized smoking cessation program may be designed based on CYP2A6 genotypes.

Synonyms:

CYP2A3, Cytochrome P450 2A6, CYP1A6, CYP1A3

Product images:

Left: Western blot using CYP2A6 antibody on recombinant cytochrome p450 at 1 ug/ml. Right: Staining using CYP2A6 antibody on normal human liver tissue at 1 ug/ml.