

Product datasheet for **AM05343PU-N**

NPDC1 Mouse Monoclonal Antibody [Clone ID: 16E4]

Product data:

Product Type:	Primary Antibodies
Clone Name:	16E4
Applications:	WB
Recommended Dilution:	Western Blot: 1:1000. Positive Control: Brain tissue lysate (mouse and rat tested, human not yet tested).
Reactivity:	Human, Mouse, Rat
Host:	Mouse
Isotype:	IgG1
Clonality:	Monoclonal
Immunogen:	Hybridoma produced by the fusion of splenocytes from mice immunized with a synthetic peptide derived from human NPDC-1 protein and mouse myeloma cells.
Specificity:	This antibody react to NPDC-1.
Formulation:	20 mM sodium phosphate, 150 mM sodium chloride, 50% glycerol, pH 7.5, 3mM sodium azide State: Purified State: Liquid purified Ig
Concentration:	lot specific
Conjugation:	Unconjugated
Storage:	The antibody can be shipped at 2-8°C. Store (in aliquots) at -20°C only. Avoid repeated freezing and thawing.
Stability:	Shelf life: one year from despatch.
Gene Name:	neural proliferation, differentiation and control, 1
Database Link:	Entrez Gene 56654 Human Q9NQX5



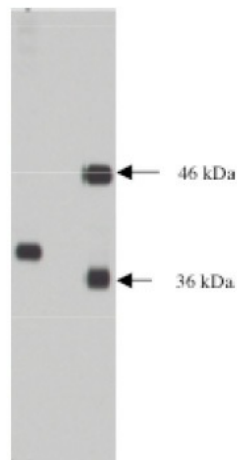
[View online »](#)

Background:

The discovery of NPDC-1 (neuronal proliferation, differentiation and control protein 1) was the result of a study of genes that were preferentially expressed in immortalized neural precursor cell lines at the onset of contact inhibition of proliferation and subsequent differentiation. It was further found that transfection of transformed cells with NPDC-1 led to increased doubling times and suppression of many characteristics of transformation. NPDC-1 is differentially expressed in brain and lung and has been shown to interact directly with the transcription factor E2F-1 as well as D-type cyclins and cdk2. NPDC-1 has been identified as a modulator of transcriptional events mediated by retinoic acid and the protein level and activity of NPDC-1 have been shown to be regulated by phosphorylation mediated proteasomal degradation.

Synonyms:

NPDC-1

Product images:

Lane 1. Western blot using anti-NPDC-1 on 10 ug lysate transfected with NPDC-1 protein at a dilution of 1ug/ml, detected with Supersignal West Pico Substrate, 15 second exposure. Lane 2 probed with anti-Rem and anti-alpha SNAP antibodies.